

## Product datasheet for **TA356372**

### SLC22A15 Rabbit Polyclonal Antibody

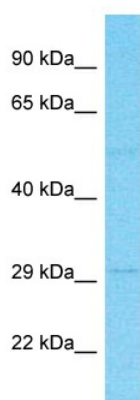
#### Product data:

Product Type:	Primary Antibodies
Applications:	WB
Reactivity:	Human
Host:	Rabbit
Clonality:	Polyclonal
Immunogen:	The immunogen is a synthetic peptide directed towards the N-terminal region of Human SLC22A15
Specificity:	<b>Expected reactivity:</b> Cow, Dog, Horse, Human, Rabbit, Rat <b>Homology:</b> Cow: 93%; Dog: 77%; Horse: 79%; Human: 100%; Rabbit: 93%; Rat: 85%
Formulation:	Liquid. Purified antibody supplied in 1x PBS buffer with 0.09% (w/v) sodium azide and 2% sucrose.
Concentration:	lot specific
Purification:	Affinity Purified
Conjugation:	Unconjugated
Storage:	For short term use, store at 2-8°C up to 1 week. For long term storage, store at -20°C in small aliquots to prevent freeze-thaw cycles.
Stability:	Shelf life: one year from despatch.
Predicted Protein Size:	26kDa
Gene Name:	solute carrier family 22 member 15
Database Link:	<a href="#">XP_005271063</a> <a href="#">Entrez Gene 55356 Human</a> <a href="#">Q8IZD6-2</a>
Background:	Organic ion transporters, such as SLC22A15, transport various medically and physiologically important compounds, including pharmaceuticals, toxins, hormones, neurotransmitters, and cellular metabolites. These transporters are also referred to as amphiphilic solute facilitators (ASFs).
Synonyms:	DKFZp761G0313; FLIPT1; PRO34686



[View online »](#)

## Product images:



Host: Rabbit  
 Target Name: SLC22A15  
 Sample Tissue: Stomach Tumor Lysate  
 Antibody Dilution: 1.0µg/ml

Host: Rabbit  
 Target Name: SLC22A15  
 Sample Type: Stomach Tumor lysates  
 Antibody Dilution: 1.0ug/ml