

Product datasheet for TA356369

SLC43A3 Rabbit Polyclonal Antibody

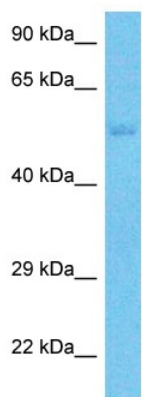
Product data:

Product Type:	Primary Antibodies
Applications:	WB
Reactivity:	Human
Host:	Rabbit
Clonality:	Polyclonal
Immunogen:	The immunogen is a synthetic peptide directed towards the N-terminal region of Human SLC43A3
Specificity:	Expected reactivity: Cow, Dog, Horse, Human, Mouse, Pig, Rabbit, Rat, Zebrafish Homology: Cow: 93%; Dog: 86%; Horse: 86%; Human: 100%; Mouse: 93%; Pig: 86%; Rabbit: 93%; Rat: 93%; Zebrafish: 85%
Formulation:	Liquid. Purified antibody supplied in 1x PBS buffer with 0.09% (w/v) sodium azide and 2% sucrose. <i>Note that this product is shipped as lyophilized powder to China customers.</i>
Concentration:	lot specific
Purification:	Affinity Purified
Conjugation:	Unconjugated
Storage:	For short term use, store at 2-8°C up to 1 week. For long term storage, store at -20°C in small aliquots to prevent freeze-thaw cycles.
Stability:	Shelf life: one year from despatch.
Predicted Protein Size:	54kDa
Gene Name:	solute carrier family 43 member 3
Database Link:	XP_005274010 Entrez Gene 29015 Human Q8NBI5
Background:	SLC43A3 is a putative transporter.
Synonyms:	DKFZp762A227; Eeg1; FOAP-13; PRO1659; SEEEG-1



[View online »](#)

Product images:



Host: Rabbit
Target Name: SLC43A3
Sample Tissue: Jurkat Cell Lysate
Antibody Dilution: 1.0 μ g/ml

Host: Rabbit
Target Name: SLC43A3
Sample Type: Jurkat Whole Cell lysates
Antibody Dilution: 1.0ug/ml