

Product datasheet for **TA356368**

SLC25A24 Rabbit Polyclonal Antibody

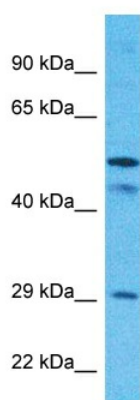
Product data:

Product Type:	Primary Antibodies
Applications:	WB
Reactivity:	Human
Host:	Rabbit
Clonality:	Polyclonal
Immunogen:	The immunogen is a synthetic peptide directed towards the N-terminal region of Human SCMC1
Specificity:	Expected reactivity: Cow, Dog, Guinea Pig, Horse, Human, Mouse, Pig, Rabbit, Rat, Yeast, Zebrafish Homology: Cow: 100%; Dog: 75%; Guinea Pig: 93%; Horse: 93%; Human: 100%; Mouse: 100%; Pig: 100%; Rabbit: 100%; Rat: 100%; Yeast: 92%; Zebrafish: 83%
Formulation:	Liquid. Purified antibody supplied in 1x PBS buffer with 0.09% (w/v) sodium azide and 2% sucrose.
Concentration:	lot specific
Purification:	Affinity purified
Conjugation:	Unconjugated
Storage:	For short term use, store at 2-8°C up to 1 week. For long term storage, store at -20°C in small aliquots to prevent freeze-thaw cycles.
Stability:	Shelf life: one year from despatch.
Predicted Protein Size:	52kDa
Gene Name:	solute carrier family 25 member 24
Database Link:	Entrez Gene 29957 Human Q6NUK1
Background:	This gene encodes a carrier protein that transports ATP-Mg exchanging it for phosphate. Multiple transcript variants encoding different isoforms have been found for this gene.
Synonyms:	APC1; DKFZp586G0123; MCSC1; SCAMC-1; SCAMC1



[View online »](#)

Product images:



Host: Rabbit
Target Name: SCMC1
Sample Tissue: MCF7 Cell Lysate
Antibody Dilution: 1.0 μ g/ml

Host: Rabbit
Target Name: SCMC1
Sample Type: MCF7 Whole Cell lysates
Antibody Dilution: 1.0ug/ml