

Product datasheet for **TA356367**

SLCO2B1 Rabbit Polyclonal Antibody

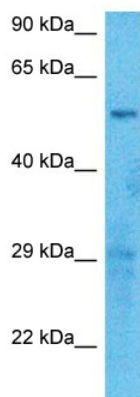
Product data:

Product Type:	Primary Antibodies
Applications:	WB
Reactivity:	Human
Host:	Rabbit
Clonality:	Polyclonal
Immunogen:	The immunogen is a synthetic peptide directed towards the C-terminal region of Human SLCO2B1
Specificity:	Expected reactivity: Cow, Dog, Guinea Pig, Horse, Human, Mouse, Pig, Rabbit, Rat Homology: Cow: 93%; Dog: 93%; Guinea Pig: 86%; Horse: 86%; Human: 100%; Mouse: 93%; Pig: 93%; Rabbit: 100%; Rat: 93%
Formulation:	Liquid. Purified antibody supplied in 1x PBS buffer with 0.09% (w/v) sodium azide and 2% sucrose. <i>Note that this product is shipped as lyophilized powder to China customers.</i>
Concentration:	lot specific
Purification:	Affinity Purified
Conjugation:	Unconjugated
Storage:	For short term use, store at 2-8°C up to 1 week. For long term storage, store at -20°C in small aliquots to prevent freeze-thaw cycles.
Stability:	Shelf life: one year from despatch.
Predicted Protein Size:	53kDa
Gene Name:	solute carrier organic anion transporter family member 2B1
Database Link:	Entrez Gene 11309 Human O94956-2
Background:	This locus encodes a member of the organic anion-transporting polypeptide family of membrane proteins. The protein encoded by this locus may function in regulation of placental uptake of sulfated steroids. Alternatively spliced transcript variants have been described.
Synonyms:	DKFZp686E0517; KIAA0880; OATP-B; OATP-RP2; OATP2B1; OATPB; OATPRP2; SLC21A9



[View online »](#)

Product images:



Host: Rabbit
Target Name: SLCO2B1
Sample Tissue: U937 Cell Lysate
Antibody Dilution: 1.0 μ g/ml

Host: Rabbit
Target Name: SLCO2B1
Sample Type: U937 Whole Cell lysates
Antibody Dilution: 1.0ug/ml