

Product datasheet for **TA356363**

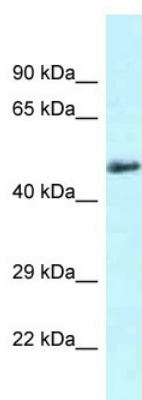
Slc1a4 Rabbit Polyclonal Antibody

Product data:

Product Type:	Primary Antibodies
Applications:	WB
Reactivity:	Mouse
Host:	Rabbit
Clonality:	Polyclonal
Specificity:	Expected reactivity: Dog, Horse, Human, Mouse, Rabbit, Rat Homology: Dog: 100%; Horse: 100%; Human: 100%; Mouse: 93%; Rabbit: 93%; Rat: 93%
Formulation:	Liquid. Purified antibody supplied in 1x PBS buffer with 0.09% (w/v) sodium azide and 2% sucrose. <i>Note that this product is shipped as lyophilized powder to China customers.</i>
Concentration:	lot specific
Purification:	Affinity Purified
Conjugation:	Unconjugated
Storage:	For short term use, store at 2-8°C up to 1 week. For long term storage, store at -20°C in small aliquots to prevent freeze-thaw cycles.
Stability:	Shelf life: one year from despatch.
Predicted Protein Size:	56kDa
Gene Name:	solute carrier family 1 (glutamate/neutral amino acid transporter), member 4
Database Link:	NP_061349 Entrez Gene 55963 Mouse O35874
Background:	Slc1a4 is a transporter for alanine, serine, cysteine, and threonine. It exhibits sodium dependence.
Synonyms:	ASCT1; SATT



[View online »](#)

Product images:

WB Suggested Anti-Slc1a4 Antibody
Titration: 1.0 ug/ml
Positive Control: Mouse Heart