

Product datasheet for **TA356361**

NKCC1 (SLC12A2) Rabbit Polyclonal Antibody

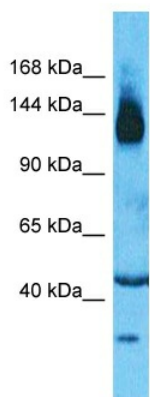
Product data:

Product Type:	Primary Antibodies
Applications:	WB
Reactivity:	Human, Mouse
Host:	Rabbit
Clonality:	Polyclonal
Immunogen:	The immunogen is a synthetic peptide directed towards the N-terminal region of Human SLC12A2
Specificity:	Expected reactivity: Cow, Human, Mouse, Pig, Rat Homology: Cow: 100%; Human: 100%; Mouse: 100%; Pig: 100%; Rat: 93%
Formulation:	Liquid. Purified antibody supplied in 1x PBS buffer with 0.09% (w/v) sodium azide and 2% sucrose. <i>Note that this product is shipped as lyophilized powder to China customers.</i>
Concentration:	lot specific
Purification:	Affinity Purified
Conjugation:	Unconjugated
Storage:	For short term use, store at 2-8°C up to 1 week. For long term storage, store at -20°C in small aliquots to prevent freeze-thaw cycles.
Stability:	Shelf life: one year from despatch.
Predicted Protein Size:	133kDa
Gene Name:	solute carrier family 12 member 2
Database Link:	NP_001037 Entrez Gene 6558 Human P55011
Background:	The protein encoded by this gene mediates sodium and chloride transport and reabsorption. The encoded protein is a membrane protein and is important in maintaining proper ionic balance and cell volume. This protein is phosphorylated in response to DNA damage. Three transcript variants encoding two different isoforms have been found for this gene.
Synonyms:	BSC; BSC2; MGC104233; NKCC1



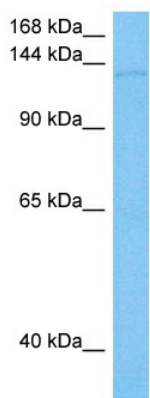
[View online »](#)

Product images:



Host: Rabbit
 Target Name: SLC12A2
 Sample Tissue: Thymus Tumor Lysate
 Antibody Dilution: 1.0µg/ml

Host: Rabbit
 Target Name: SLC12A2
 Sample Type: Thymus Tumor lysates
 Antibody Dilution: 1.0ug/ml



Host: Rabbit
 Target Name: Slc12a2
 Sample Type: Mouse Testis Lysate
 Antibody Dilution: 1.0µg/ml

Host: Mouse
 Target Name: SLC12A2
 Sample Tissue: Mouse Testis
 Antibody Dilution: 1ug/ml