

Product datasheet for **TA356360**

SLC25A30 Rabbit Polyclonal Antibody

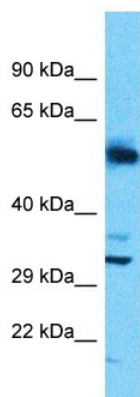
Product data:

Product Type:	Primary Antibodies
Applications:	WB
Reactivity:	Human
Host:	Rabbit
Clonality:	Polyclonal
Immunogen:	The immunogen is a synthetic peptide directed towards the N-terminal region of Human SLC25A30
Specificity:	Expected reactivity: Cow, Dog, Guinea Pig, Horse, Human, Mouse, Pig, Rabbit, Rat Homology: Cow: 86%; Dog: 93%; Guinea Pig: 79%; Horse: 93%; Human: 100%; Mouse: 86%; Pig: 86%; Rabbit: 86%; Rat: 93%
Formulation:	Liquid. Purified antibody supplied in 1x PBS buffer with 0.09% (w/v) sodium azide and 2% sucrose.
Concentration:	lot specific
Purification:	Affinity Purified
Conjugation:	Unconjugated
Storage:	For short term use, store at 2-8°C up to 1 week. For long term storage, store at -20°C in small aliquots to prevent freeze-thaw cycles.
Stability:	Shelf life: one year from despatch.
Predicted Protein Size:	32kDa
Gene Name:	solute carrier family 25 member 30
Database Link:	NP_001010875 Entrez Gene 253512 Human Q5SVS4
Background:	Although the outer mitochondrial membrane is permeable to many small metabolites, transport of solutes across the inner mitochondrial membrane is achieved by members of the mitochondrial carrier protein family, such as SLC25A30.
Synonyms:	KMCP1



[View online »](#)

Product images:



Host: Rabbit
Target Name: SLC25A30
Sample Tissue: Uterus Tumor Lysate
Antibody Dilution: 1.0µg/ml

Host: Rabbit
Target Name: SLC25A30
Sample Type: Uterus Tumor lysates
Antibody Dilution: 1.0ug/ml