

Product datasheet for **TA356358**

ABCA13 Rabbit Polyclonal Antibody

Product data:

Product Type:	Primary Antibodies
Applications:	WB
Reactivity:	Human
Host:	Rabbit
Clonality:	Polyclonal
Immunogen:	The immunogen is a synthetic peptide directed towards the middle region of Human ABCA13
Specificity:	Expected reactivity: Human Homology: Human: 100%
Formulation:	Liquid. Purified antibody supplied in 1x PBS buffer with 0.09% (w/v) sodium azide and 2% sucrose. <i>Note that this product is shipped as lyophilized powder to China customers.</i>
Concentration:	lot specific
Purification:	Affinity Purified
Conjugation:	Unconjugated
Storage:	For short term use, store at 2-8°C up to 1 week. For long term storage, store at -20°C in small aliquots to prevent freeze-thaw cycles.
Stability:	Shelf life: one year from despatch.
Predicted Protein Size:	34kDa
Gene Name:	ATP binding cassette subfamily A member 13
Database Link:	Entrez Gene 154664 Human Q86UQ4-2



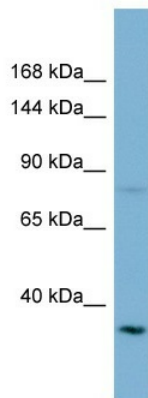
[View online »](#)

Background:

In human, the ATP-binding cassette (ABC) family of transmembrane transporters has at least 48 genes and 7 gene subfamilies. This gene is a member of ABC gene subfamily A (ABCA). Genes within the ABCA family typically encode several thousand amino acids. Like other ABC transmembrane transporter proteins, this protein has 12 or more transmembrane alpha-helix domains that likely arrange to form a single central chamber with multiple substrate binding sites. It is also predicted to have two large extracellular domains and two nucleotide binding domains as is typical for ABCA proteins. Alternative splice variants have been described but their biological validity has not been demonstrated.

Synonyms:

DKFZp313D2411; FLJ16398; FLJ33876; FLJ33951

Product images:

Host: Rabbit
Target Name: ABCA13
Sample Type: OVCAR-3 Whole Cell lysates
Antibody Dilution: 1.0ug/ml