

## Product datasheet for **TA356356**

### Dlg3 Rabbit Polyclonal Antibody

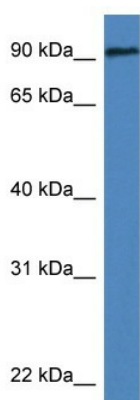
#### Product data:

Product Type:	Primary Antibodies
Applications:	WB
Reactivity:	Rat
Host:	Rabbit
Clonality:	Polyclonal
Specificity:	<b>Expected reactivity:</b> Cow, Dog, Guinea Pig, Human, Mouse, Rabbit, Rat <b>Homology:</b> Cow: 100%; Dog: 93%; Guinea Pig: 100%; Human: 100%; Mouse: 100%; Rabbit: 100%; Rat: 100%
Formulation:	Liquid. Purified antibody supplied in 1x PBS buffer with 0.09% (w/v) sodium azide and 2% sucrose. <i>Note that this product is shipped as lyophilized powder to China customers.</i>
Concentration:	lot specific
Purification:	Affinity Purified
Conjugation:	Unconjugated
Storage:	For short term use, store at 2-8°C up to 1 week. For long term storage, store at -20°C in small aliquots to prevent freeze-thaw cycles.
Stability:	Shelf life: one year from despatch.
Predicted Protein Size:	94kDa
Gene Name:	discs large homolog 3
Database Link:	<a href="#">NP_113827</a> <a href="#">Entrez Gene 58948 Rat</a> <a href="#">Q62936</a>
Background:	Human homolog is a protein with guanylate kinase activity; Dlg3 is involved in synaptogenesis and cell proliferation.
Synonyms:	KIAA1232; MRX; MRX90; NE-Dlg; NEDLG; neuroendocrine-DLG; SAP-102; SAP102; XLMR



[View online »](#)

Product images:



WB Suggested Anti-Dlg3 Antibody  
Titration: 1.0 ug/ml  
Positive Control: Rat Brain