

Product datasheet for **TA356355**

SP1 Rabbit Polyclonal Antibody

Product data:

Product Type:	Primary Antibodies
Applications:	WB
Reactivity:	Human
Host:	Rabbit
Clonality:	Polyclonal
Immunogen:	The immunogen is a synthetic peptide directed towards the middle region of human SP1
Specificity:	Expected reactivity: Cow, Dog, Goat, Guinea Pig, Human, Mouse, Pig, Rabbit, Rat Homology: Cow: 100%; Dog: 100%; Goat: 100%; Guinea Pig: 87%; Human: 100%; Mouse: 100%; Pig: 100%; Rabbit: 100%; Rat: 100%
Formulation:	Liquid. Purified antibody supplied in 1x PBS buffer with 0.09% (w/v) sodium azide and 2% sucrose. <i>Note that this product is shipped as lyophilized powder to China customers.</i>
Concentration:	lot specific
Purification:	Affinity Purified
Conjugation:	Unconjugated
Storage:	For short term use, store at 2-8°C up to 1 week. For long term storage, store at -20°C in small aliquots to prevent freeze-thaw cycles.
Stability:	Shelf life: one year from despatch.
Predicted Protein Size:	81kDa
Gene Name:	Sp1 transcription factor
Database Link:	NP_612482 Entrez Gene 6667 Human P08047
Background:	SP1 belongs to the Sp1 C2H2-type zinc-finger protein family. It contains 3 C2H2-type zinc fingers. SP1 binds to GC box promoters elements and selectively activates mRNA synthesis from genes that contain functional recognition sites. It can interact with G/C-rich motifs from serotonin receptor promoter.
Synonyms:	TSFP1

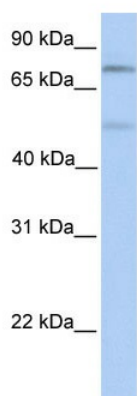


[View online »](#)

Protein Families: Druggable Genome, ES Cell Differentiation/IPS, Stem cell - Pluripotency, Stem cell relevant signaling - JAK/STAT signaling pathway, Transcription Factors

Protein Pathways: Huntington's disease, TGF-beta signaling pathway

Product images:



WB Suggested Anti-SP1 Antibody Titration: 0.2-1 ug/ml
Positive Control: Human Muscle