

Product datasheet for **TA356351**

MUC13 Rabbit Polyclonal Antibody

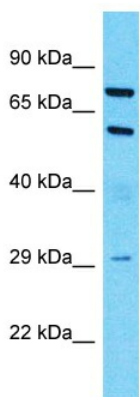
Product data:

Product Type:	Primary Antibodies
Applications:	WB
Reactivity:	Human
Host:	Rabbit
Clonality:	Polyclonal
Immunogen:	The immunogen is a synthetic peptide directed towards the C-terminal region of Human MUC13
Specificity:	Expected reactivity: Dog, Guinea Pig, Horse, Human, Pig, Rabbit, Rat Homology: Dog: 77%; Guinea Pig: 77%; Horse: 77%; Human: 100%; Pig: 79%; Rabbit: 79%; Rat: 80%
Formulation:	Liquid. Purified antibody supplied in 1x PBS buffer with 0.09% (w/v) sodium azide and 2% sucrose. <i>Note that this product is shipped as lyophilized powder to China customers.</i>
Concentration:	lot specific
Purification:	Affinity Purified
Conjugation:	Unconjugated
Storage:	For short term use, store at 2-8°C up to 1 week. For long term storage, store at -20°C in small aliquots to prevent freeze-thaw cycles.
Stability:	Shelf life: one year from despatch.
Predicted Protein Size:	56kDa
Gene Name:	mucin 13, cell surface associated
Database Link:	Entrez Gene 56667 Human Q9H3R2
Background:	Epithelial mucins, such as MUC13, are a family of secreted and cell surface glycoproteins expressed by ductal and glandular epithelial tissues.
Synonyms:	DRCC1; FLJ20063; MUC-13; RECC



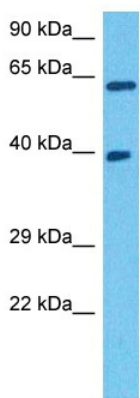
[View online »](#)

Product images:



Host: Rabbit
 Target Name: MUC13
 Sample Tissue: Lymph Node Tumor Lysate
 Antibody Dilution: 1.0µg/ml

Host: Rabbit
 Target Name: MUC13
 Sample Type: Lymph Node Tumor lysates
 Antibody Dilution: 1.0ug/ml



Host: Rabbit
 Target Name: MUC13
 Sample Type: HT1080 Cell Lysate
 Antibody Dilution: 1.0µg/ml

Host: Rabbit
 Target Name: MUC13
 Sample Tissue: Human HT1080 Whole Cell
 Antibody Dilution: 1 ug/ml