

## Product datasheet for **TA356348**

### GOT2 Rabbit Polyclonal Antibody

#### Product data:

Product Type:	Primary Antibodies
Applications:	IHC, WB
Reactivity:	Human
Host:	Rabbit
Clonality:	Polyclonal
Immunogen:	The immunogen is a synthetic peptide directed towards the C terminal region of human GOT2
Specificity:	<b>Expected reactivity:</b> Cow, Dog, Guinea Pig, Horse, Human, Mouse, Rabbit, Rat, Zebrafish <b>Homology:</b> Cow: 100%; Dog: 100%; Guinea Pig: 100%; Horse: 100%; Human: 100%; Mouse: 100%; Rabbit: 100%; Rat: 100%; Zebrafish: 100%
Formulation:	Liquid. Purified antibody supplied in 1x PBS buffer with 0.09% (w/v) sodium azide and 2% sucrose. <i>Note that this product is shipped as lyophilized powder to China customers.</i>
Concentration:	lot specific
Purification:	Protein A purified
Conjugation:	Unconjugated
Storage:	For short term use, store at 2-8°C up to 1 week. For long term storage, store at -20°C in small aliquots to prevent freeze-thaw cycles.
Stability:	Shelf life: one year from despatch.
Predicted Protein Size:	45kDa
Gene Name:	glutamic-oxaloacetic transaminase 2
Database Link:	<a href="#">NP_002071</a> <a href="#">Entrez Gene 2806 Human</a> <a href="#">P00505</a>



[View online »](#)

**Background:**

Glutamic-oxaloacetic transaminase is a pyridoxal phosphate-dependent enzyme which exists in cytoplasmic and inner-membrane mitochondrial forms, GOT1 and GOT2, respectively. GOT plays a role in amino acid metabolism and the urea and tricarboxylic acid cycles. The two enzymes are homodimeric and show close homology. Glutamic-oxaloacetic transaminase is a pyridoxal phosphate-dependent enzyme which exists in cytoplasmic and inner-membrane mitochondrial forms, GOT1 and GOT2, respectively. GOT plays a role in amino acid metabolism and the urea and tricarboxylic acid cycles. The two enzymes are homodimeric and show close homology.

**Synonyms:**

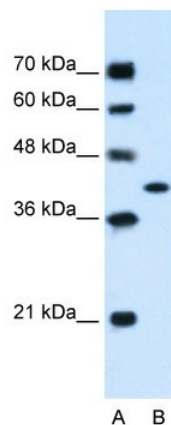
FABP-1; FABPpm; FLJ40994; KAT4; KATIV; mAspAT; mitAAT

**Protein Families:**

Stem cell - Pluripotency

**Protein Pathways:**

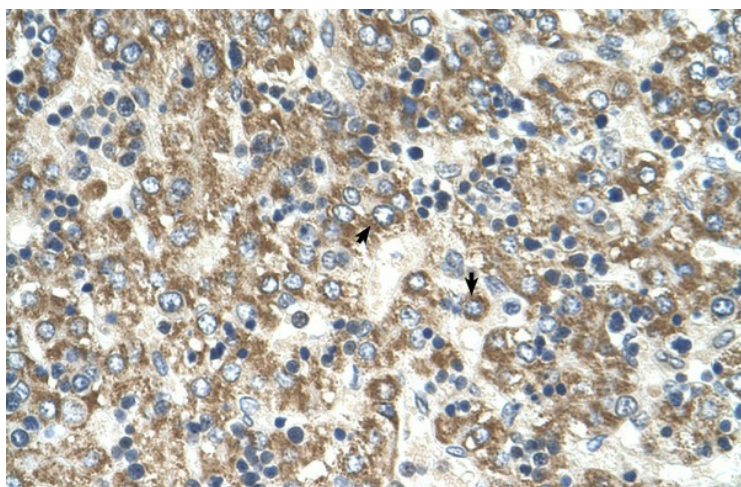
Alanine, aspartate and glutamate metabolism, Arginine and proline metabolism, Cysteine and methionine metabolism, Metabolic pathways, Phenylalanine, tyrosine and tryptophan biosynthesis, Phenylalanine metabolism, Tyrosine metabolism

**Product images:**

WB Suggested Anti-GOT2 Antibody Titration:

1.25ug/ml

Positive Control: HepG2 cell lysate GOT2 is supported by BioGPS gene expression data to be expressed in HepG2



Human Liver