

Product datasheet for **TA356346**

MARCHF11 Rabbit Polyclonal Antibody

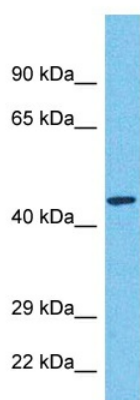
Product data:

Product Type:	Primary Antibodies
Applications:	WB
Reactivity:	Human
Host:	Rabbit
Clonality:	Polyclonal
Immunogen:	The immunogen is a synthetic peptide directed towards the C-terminal region of Human MARHB
Specificity:	Expected reactivity: Human
Formulation:	Liquid. Purified antibody supplied in 1x PBS buffer with 0.09% (w/v) sodium azide and 2% sucrose.
Concentration:	lot specific
Purification:	Affinity Purified
Conjugation:	Unconjugated
Storage:	For short term use, store at 2-8°C up to 1 week. For long term storage, store at -20°C in small aliquots to prevent freeze-thaw cycles.
Stability:	Shelf life: one year from despatch.
Predicted Protein Size:	44kDa
Gene Name:	membrane associated ring-CH-type finger 11
Database Link:	NP_001096032 Entrez Gene 441061 Human A6NNE9
Background:	MARCH11 is a member of the MARCH family of membrane-bound E3 ubiquitin ligases (EC 6.3.2.19). These enzymes add ubiquitin (see MIM 191339) to target lysines in substrate proteins, thereby signaling their intracellular transport. March11 appears to have a role in ubiquitin-mediated protein sorting in the trans-Golgi network (TGN)-multivesicular body (MVB) transport pathway (Morokuma et al., 2007 [PubMed 17604280]).[supplied by OMIM, Apr 2010]
Synonyms:	MARCH-XI



[View online »](#)

Product images:



Host: Rabbit
Target Name: MARHB
Sample Tissue: Fetal Kidney Lysate
Antibody Dilution: 1.0µg/ml

Host: Rabbit
Target Name: MARHB
Sample Type: Fetal Kidney lysates
Antibody Dilution: 1ug/ml