

## Product datasheet for **TA356340**

### Marchf10 Rabbit Polyclonal Antibody

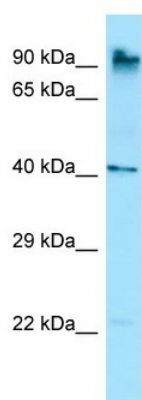
#### Product data:

Product Type:	Primary Antibodies
Applications:	WB
Reactivity:	Rat
Host:	Rabbit
Clonality:	Polyclonal
Specificity:	<b>Expected reactivity:</b> Cow, Dog, Guinea Pig, Horse, Human, Mouse, Rabbit, Rat <b>Homology:</b> Cow: 93%; Dog: 93%; Guinea Pig: 93%; Horse: 93%; Human: 100%; Mouse: 93%; Rabbit: 79%; Rat: 86%
Formulation:	Liquid. Purified antibody supplied in 1x PBS buffer with 0.09% (w/v) sodium azide and 2% sucrose. <i>Note that this product is shipped as lyophilized powder to China customers.</i>
Concentration:	lot specific
Purification:	Affinity Purified
Conjugation:	Unconjugated
Storage:	For short term use, store at 2-8°C up to 1 week. For long term storage, store at -20°C in small aliquots to prevent freeze-thaw cycles.
Stability:	Shelf life: one year from despatch.
Predicted Protein Size:	86kDa
Gene Name:	membrane associated ring-CH-type finger 10
Database Link:	<a href="#">NP_001013995</a> <a href="#">Entrez Gene 303596 Rat</a> <a href="#">Q5XIV2</a>
Synonyms:	FLJ35757; MARCH-X; RNF190



[View online »](#)

Product images:



Host: Rabbit  
Target Name: Rnf190  
Antibody Dilution: 1.0ug/ml  
Sample Type: Rat Stomach