

Product datasheet for **TA356324**

DZIP3 Rabbit Polyclonal Antibody

Product data:

Product Type:	Primary Antibodies
Applications:	WB
Reactivity:	Human
Host:	Rabbit
Clonality:	Polyclonal
Immunogen:	The immunogen is a synthetic peptide directed towards the C terminal region of human DZIP3
Specificity:	Expected reactivity: Human Homology: Cow: 93%; Dog: 86%; Horse: 86%; Human: 100%; Mouse: 86%; Pig: 86%; Rabbit: 100%; Rat: 79%
Formulation:	Liquid. Purified antibody supplied in 1x PBS buffer with 0.09% (w/v) sodium azide and 2% sucrose. <i>Note that this product is shipped as lyophilized powder to China customers.</i>
Concentration:	lot specific
Purification:	Affinity purified
Conjugation:	Unconjugated
Storage:	For short term use, store at 2-8°C up to 1 week. For long term storage, store at -20°C in small aliquots to prevent freeze-thaw cycles.
Stability:	Shelf life: one year from despatch.
Predicted Protein Size:	132 kDa
Gene Name:	DAZ interacting zinc finger protein 3
Database Link:	NP_055463 Entrez Gene 9666 Human Q86Y13
Background:	E3 Ubiquitin ligase proteins mediate ubiquitination and subsequent proteasomal degradation of target proteins. E3 ubiquitin ligases accept ubiquitin from an E2 ubiquitin-conjugating enzyme in the form of a thioester and then directly transfers the ubiquitin to targeted substrates. Able to specifically bind RNA.

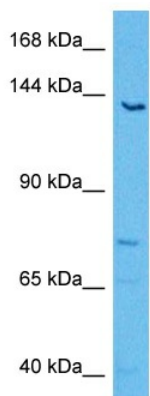


[View online »](#)

Synonyms: FLJ13327; FLJ57977; FLJ58022; FLJ58223; hRUL138; KIAA0675; UURF2

Protein Families: Druggable Genome

Product images:



Host: Rabbit
Target Name: DZIP3
Sample Type: HeLa Cell Lysate
Antibody Dilution: 1.0 μ g/ml

Host: Rabbit
Target Name: DZIP3
Sample Tissue: Human HeLa Whole Cell lysates
Antibody Dilution: 2 μ g/ml