

Product datasheet for **TA356318**

Fbxl3 Rabbit Polyclonal Antibody

Product data:

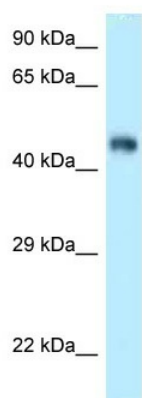
Product Type:	Primary Antibodies
Applications:	WB
Reactivity:	Mouse
Host:	Rabbit
Clonality:	Polyclonal
Specificity:	Expected reactivity: Cow, Dog, Guinea Pig, Horse, Human, Mouse, Rabbit, Rat, Sheep, Zebrafish Homology: Cow: 100%; Dog: 100%; Guinea Pig: 100%; Horse: 100%; Human: 100%; Mouse: 100%; Rabbit: 100%; Rat: 100%; Sheep: 100%; Zebrafish: 86%
Formulation:	Liquid. Purified antibody supplied in 1x PBS buffer with 0.09% (w/v) sodium azide and 2% sucrose. <i>Note that this product is shipped as lyophilized powder to China customers.</i>
Concentration:	lot specific
Purification:	Affinity Purified
Conjugation:	Unconjugated
Storage:	For short term use, store at 2-8°C up to 1 week. For long term storage, store at -20°C in small aliquots to prevent freeze-thaw cycles.
Stability:	Shelf life: one year from despatch.
Predicted Protein Size:	49kDa
Gene Name:	F-box and leucine-rich repeat protein 3
Database Link:	NP_056637 Entrez Gene 50789 Mouse Q8C4V4
Background:	Fbxl3 is a substrate-recognition component of some SCF (SKP1-CUL1-F-box protein)-type E3 ubiquitin ligase complex involved in circadian clock function. The SCF(FBXL3) complex acts by mediating ubiquitination and subsequent degradation of CRY1 and CRY2. Recruiter of target protein that may recognize and bind to some phosphorylated proteins and promotes their ubiquitination and degradation.



[View online »](#)

Synonyms: FBL3; FBL3A; FBXL3A

Product images:



WB Suggested Anti-Fbxl3 Antibody
Titration: 1.0 ug/ml
Positive Control: Mouse Kidney