

Product datasheet for **TA356314**

STUB1 Rabbit Polyclonal Antibody

Product data:

Product Type:	Primary Antibodies
Applications:	IHC, WB
Reactivity:	Human, Dog
Host:	Rabbit
Clonality:	Polyclonal
Immunogen:	The immunogen is a synthetic peptide directed towards the C terminal region of human STUB1
Specificity:	Expected reactivity: Cow, Dog, Guinea Pig, Horse, Human, Mouse, Rat, Zebrafish Homology: Cow: 100%; Dog: 100%; Guinea Pig: 100%; Horse: 100%; Human: 100%; Mouse: 100%; Rat: 100%; Zebrafish: 93%
Formulation:	Liquid. Purified antibody supplied in 1x PBS buffer with 0.09% (w/v) sodium azide and 2% sucrose. <i>Note that this product is shipped as lyophilized powder to China customers.</i>
Concentration:	lot specific
Purification:	Affinity Purified
Conjugation:	Unconjugated
Storage:	For short term use, store at 2-8°C up to 1 week. For long term storage, store at -20°C in small aliquots to prevent freeze-thaw cycles.
Stability:	Shelf life: one year from despatch.
Predicted Protein Size:	35kDa
Gene Name:	STIP1 homology and U-box containing protein 1
Database Link:	NP_005852 Entrez Gene 479892 Dog Entrez Gene 10273 Human Q9UNE7
Background:	STUB1 modulates the activity of several chaperone complexes, including Hsp70, Hsc70 and Hsp90. It has E3 ubiquitin-protein ligase activity and targets misfolded chaperone substrates towards proteasomal degradation. STUB1 mediates transfer of non-canonical short ubiquitin chains to HSPA8 that have no effect on HSPA8 degradation.



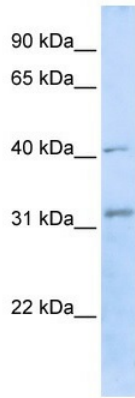
[View online »](#)

Synonyms: CHIP; HSPABP2; NY-CO-7; SDCCAG7; UBOX1

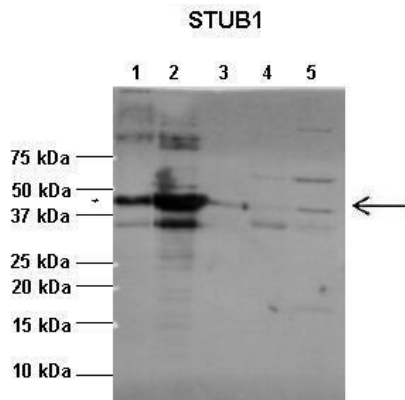
Protein Families: Druggable Genome

Protein Pathways: Ubiquitin mediated proteolysis

Product images:

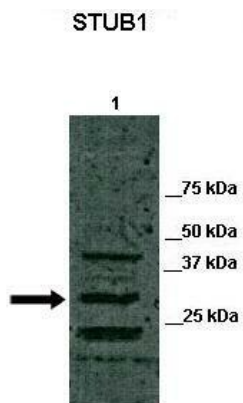


WB Suggested Anti-STUB1 Antibody Titration: 0.2-1 ug/ml
 ELISA Titer: 1:312500
 Positive Control: Transfected 293T



Lanes:
 1:1ug insoluble STUB1 protein, 2:1ug soluble STUB1 protein, 3:1ug EPM2A protein, 4:1ug insoluble PPP1R3^C protein, 5:1ug soluble PPP1R3^C protein
 Primary Antibody Dilution: 1:2500
 Secondary Antibody: Anti-rabbit-AP
 Secondary Antibody Dilution: 1:20,000
 Gene Name: STUB1
 Submitted by: Pedro Castanheira, Biocant

See Immunoblot 2 Data and customer Feedback for more Information



See Immunoblot 3 Data and Customer Feedback for more Information

Lanes:

Lane 1: 40ug canine retina lysate

Primary Antibody Dilution:

1:1000

Secondary Antibody:

Goat anti-rabbit-HRP

Secondary Antibody Dilution:

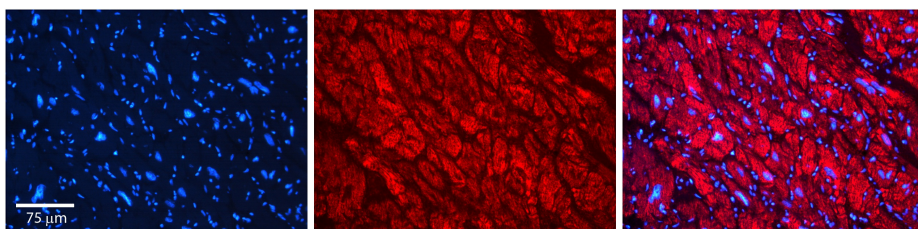
1:5000

Gene Name:

STUB1

Submitted by:

Dr. Stefania Marsili and Dr. William Beltran,
University of Pennsylvania



Rabbit Anti-STUB1 Antibody

Catalog Number: TA356314

Formalin Fixed Paraffin Embedded Tissue:

Human heart Tissue

Observed Staining: Cytoplasmic

Primary Antibody Concentration: N/A

Other Working Concentrations: 1:600

Secondary Antibody: Donkey anti-Rabbit-Cy3

Secondary Antibody Concentration: 1:200

Magnification: 20X

Exposure Time: 0.5–2.0 sec