

## Product datasheet for TA356312

### ARIH1 Rabbit Polyclonal Antibody

#### Product data:

Product Type:	Primary Antibodies
Applications:	WB
Reactivity:	Human
Host:	Rabbit
Clonality:	Polyclonal
Immunogen:	The immunogen is a synthetic peptide directed towards the C terminal region of human ARIH1
Specificity:	<b>Expected reactivity:</b> Cow, Dog, Guinea Pig, Horse, Human, Mouse, Rabbit, Rat, Zebrafish <b>Homology:</b> Cow: 100%; Dog: 100%; Guinea Pig: 100%; Horse: 100%; Human: 100%; Mouse: 100%; Rabbit: 100%; Rat: 100%; Zebrafish: 100%
Formulation:	Liquid. Purified antibody supplied in 1x PBS buffer with 0.09% (w/v) sodium azide and 2% sucrose. <i>Note that this product is shipped as lyophilized powder to China customers.</i>
Concentration:	lot specific
Purification:	Protein A purified
Conjugation:	Unconjugated
Storage:	For short term use, store at 2-8°C up to 1 week. For long term storage, store at -20°C in small aliquots to prevent freeze-thaw cycles.
Stability:	Shelf life: one year from despatch.
Predicted Protein Size:	61kDa
Gene Name:	ariadne RBR E3 ubiquitin protein ligase 1
Database Link:	<a href="#">NP_005735</a> <a href="#">Entrez Gene 25820 Human</a> <a href="#">Q9Y4X5</a>
Background:	ARIH1 might act as an E3 ubiquitin-protein ligase, or as part of the E3 complex, which accepts ubiquitin from specific E2 ubiquitin-conjugating enzymes, such as UBE2L3/UBCM4, and then transfers it to substrates.

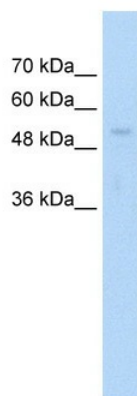


[View online »](#)

**Synonyms:** ARI; ARI-1; DKFZp686O13120; FLJ20329; FLJ93118; H7-AP2; HARI; HHARI; MOP-6; MOP6; UBCH7BP

**Protein Families:** Druggable Genome

**Product images:**



WB Suggested Anti-ARIH1 Antibody Titration:  
1.25ug/ml  
Positive Control: Jurkat cell lysate