

## Product datasheet for **TA356310**

### Aly (ALYREF) Rabbit Polyclonal Antibody

#### Product data:

|                         |  |
|-------------------------|--|
| Product Type:           | Primary Antibodies   |
| Applications:           | IHC, WB  |
| Reactivity:             | Human  |
| Host:                   | Rabbit   |
| Clonality:              | Polyclonal   |
| Immunogen:              | The immunogen is a synthetic peptide directed towards the N terminal region of human THOC4   |
| Specificity:            | <b>Expected reactivity:</b> Cow, Dog, Human, Mouse, Rat, Zebrafish<br><b>Homology:</b> Cow: 100%; Dog: 100%; Human: 100%; Mouse: 100%; Rat: 100%; Zebrafish: 100%  |
| Formulation:            | Liquid. Purified antibody supplied in 1x PBS buffer with 0.09% (w/v) sodium azide and 2% sucrose.<br><i>Note that this product is shipped as lyophilized powder to China customers.</i>  |
| Concentration:          | lot specific   |
| Purification:           | Protein A purified   |
| Conjugation:            | Unconjugated   |
| Storage:                | For short term use, store at 2-8°C up to 1 week. For long term storage, store at -20°C in small aliquots to prevent freeze-thaw cycles.  |
| Stability:              | Shelf life: one year from despatch.  |
| Predicted Protein Size: | 28kDa  |
| Gene Name:              | Aly/REF export factor  |
| Database Link:          | <a href="#">NP_005773</a><br><a href="#">Entrez Gene 10189 Human</a><br><a href="#">Q86V81</a>   |
| Background:             | THOC4 is a heat stable, nuclear protein and functions as a molecular chaperone. It is thought to regulate dimerization, DNA binding, and transcriptional activity of basic region-leucine zipper (bZIP) proteins. The protein encoded by this gene is a heat stable, nuclear protein and functions as a molecular chaperone. It is thought to regulate dimerization, DNA binding, and transcriptional activity of basic region-leucine zipper (bZIP) proteins. |



[View online »](#)

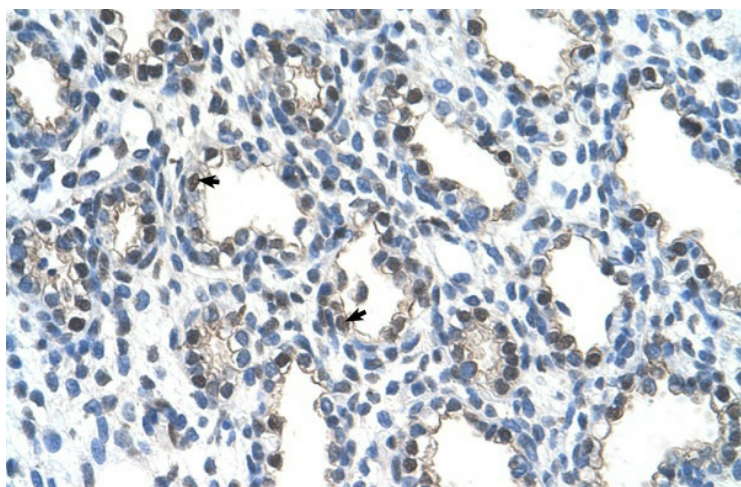
Synonyms: ALY; REF1; Refbp1; Thoc4

Protein Pathways: Spliceosome

### Product images:



WB Suggested Anti-THOC4 Antibody Titration:  
2.5ug/ml  
Positive Control: HepG2 cell lysate



Human Lung