

Product datasheet for TA356305

UBE2L6 Rabbit Polyclonal Antibody

Product data:

Product Type:	Primary Antibodies
Applications:	WB
Reactivity:	Human
Host:	Rabbit
Clonality:	Polyclonal
Immunogen:	The immunogen is a synthetic peptide directed towards the middle region of human UBE2L6
Specificity:	Expected reactivity: Cow, Dog, Human, Mouse, Pig, Rabbit, Rat Homology: Cow: 83%; Dog: 75%; Human: 100%; Mouse: 86%; Pig: 92%; Rabbit: 92%; Rat: 79%
Formulation:	Liquid. Purified antibody supplied in 1x PBS buffer with 0.09% (w/v) sodium azide and 2% sucrose. <i>Note that this product is shipped as lyophilized powder to China customers.</i>
Concentration:	lot specific
Purification:	Affinity Purified
Conjugation:	Unconjugated
Storage:	For short term use, store at 2-8°C up to 1 week. For long term storage, store at -20°C in small aliquots to prevent freeze-thaw cycles.
Stability:	Shelf life: one year from despatch.
Predicted Protein Size:	18kDa
Gene Name:	ubiquitin conjugating enzyme E2 L6
Database Link:	NP_004214 Entrez Gene 9246 Human O14933
Background:	The modification of proteins with ubiquitin is an important cellular mechanism for targeting abnormal or short-lived proteins for degradation. Ubiquitination involves at least three classes of enzymes: ubiquitin-activating enzymes (E1s), ubiquitin-conjugating enzymes (E2s), and ubiquitin-protein ligase (E3s).
Synonyms:	MGC40331; RIG-B; UBCH8
Protein Pathways:	Parkinson's disease, Ubiquitin mediated proteolysis

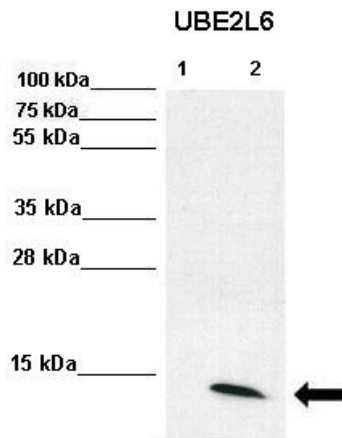


[View online »](#)

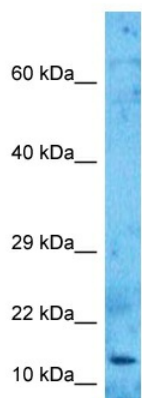
Product images:



WB Suggested Anti-UBE2L6 Antibody Titration:
 0.2-1 ug/ml
 ELISA Titer: 1:312500
 Positive Control: Human Small Intestine



WB Suggested Anti-UBE2L6 Antibody
 Positive Control: Lane1: 70ug U6A lysate, Lane, 2:
 70ug IFN-g stimulated U6A lysate
 Primary Antibody Dilution : 1:2000
 Secondary Antibody : Anti-rabbit-HRP
 Secondary Antibody Dilution : 1:5000
 Submitted by: Torsten Ginter & Dr. Oliver Kramer,
 Institute for Biochemistry and Biophysicws,
 Center for Biomedicine, Friedrich-Schiller
 University



Host: Rabbit
Target Name: UBE2L6
Sample Type: THP-1 Cell Lysate
Antibody Dilution: 1.0µg/ml

Host: Rabbit
Target Name: UBE2L6
Sample Tissue: Human THP-1 Whole Cell
Antibody Dilution: 3ug/ml