

Product datasheet for **TA356300**

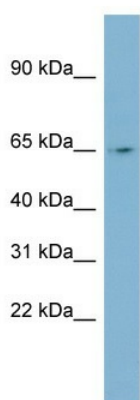
NEURL (NEURL1) Rabbit Polyclonal Antibody

Product data:

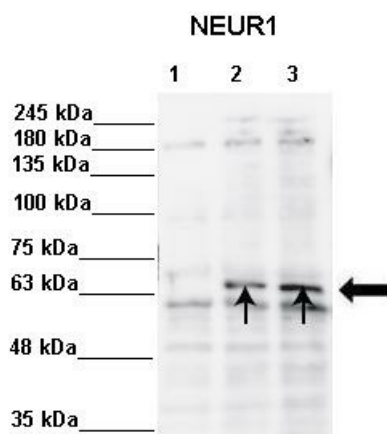
Product Type:	Primary Antibodies
Applications:	WB
Reactivity:	Human
Host:	Rabbit
Clonality:	Polyclonal
Immunogen:	The immunogen is a synthetic peptide directed towards the N terminal region of human NEURL
Specificity:	Expected reactivity: Cow, Dog, Guinea Pig, Horse, Human, Mouse, Rabbit, Rat, Zebrafish Homology: Cow: 100%; Dog: 100%; Guinea Pig: 100%; Horse: 100%; Human: 100%; Mouse: 100%; Rabbit: 100%; Rat: 100%; Zebrafish: 93%
Formulation:	Liquid. Purified antibody supplied in 1x PBS buffer with 0.09% (w/v) sodium azide and 2% sucrose.
Concentration:	lot specific
Purification:	Affinity Purified
Conjugation:	Unconjugated
Storage:	For short term use, store at 2-8°C up to 1 week. For long term storage, store at -20°C in small aliquots to prevent freeze-thaw cycles.
Stability:	Shelf life: one year from despatch.
Predicted Protein Size:	62kDa
Gene Name:	neuralized E3 ubiquitin protein ligase 1
Database Link:	NP_004201 Entrez Gene 9148 Human O76050
Protein Families:	Druggable Genome



[View online »](#)

Product images:


WB Suggested Anti-NEURL Antibody Titration:
0.2-1 ug/ml
Positive Control: Human Small Intestine



Sample Type:
Lane 1: 5ug in vitro translation without DNA Lane 2: 5ug in vitro translation hNeur1-pcDNA3 Lane 3: 5ug in vitro translation rNeur1-pcDNA3 Primary Antibody Dilution: 1:1000 Secondary Antibody: Anti-rabbit-HRP Secondary Antibody Dilution: 1:5000 Color/Signal Descriptions: NEURL Gene Name: Kati Taal and Richard Tamme, Department of Gene Technology, Tallinn University of Technology. Submitted by: