

## Product datasheet for **TA356299**

### UBE2M Rabbit Polyclonal Antibody

#### Product data:

Product Type:	Primary Antibodies
Applications:	IHC, WB
Reactivity:	Human, Mouse
Host:	Rabbit
Clonality:	Polyclonal
Immunogen:	The immunogen is a synthetic peptide directed towards the N terminal region of human UBE2M
Specificity:	<b>Expected reactivity:</b> Cow, Dog, Guinea Pig, Horse, Human, Mouse, Rabbit, Rat <b>Homology:</b> Cow: 100%; Dog: 100%; Guinea Pig: 100%; Horse: 100%; Human: 100%; Mouse: 100%; Rabbit: 100%; Rat: 100%
Formulation:	Liquid. Purified antibody supplied in 1x PBS buffer with 0.09% (w/v) sodium azide and 2% sucrose. <i>Note that this product is shipped as lyophilized powder to China customers.</i>
Concentration:	lot specific
Purification:	Affinity Purified
Conjugation:	Unconjugated
Storage:	For short term use, store at 2-8°C up to 1 week. For long term storage, store at -20°C in small aliquots to prevent freeze-thaw cycles.
Stability:	Shelf life: one year from despatch.
Predicted Protein Size:	21kDa
Gene Name:	ubiquitin conjugating enzyme E2 M
Database Link:	<a href="#">NP_003960</a> <a href="#">Entrez Gene 22192 Mouse</a> <a href="#">Entrez Gene 9040 Human</a> <a href="#">P61081</a>



[View online »](#)

**Background:**

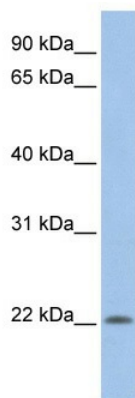
The modification of proteins with ubiquitin is an important cellular mechanism for targeting abnormal or short-lived proteins for degradation. Ubiquitination involves at least three classes of enzymes: ubiquitin-activating enzymes, or E1s, ubiquitin-conjugating enzymes, or E2s, and ubiquitin-protein ligases, or E3s. UBE2M is a member of the E2 ubiquitin-conjugating enzyme family. It is linked with a ubiquitin-like protein, NEDD8, which can be conjugated to cellular proteins, such as Cdc53/culin. The modification of proteins with ubiquitin is an important cellular mechanism for targeting abnormal or short-lived proteins for degradation. Ubiquitination involves at least three classes of enzymes: ubiquitin-activating enzymes, or E1s, ubiquitin-conjugating enzymes, or E2s, and ubiquitin-protein ligases, or E3s. This gene encodes a member of the E2 ubiquitin-conjugating enzyme family. The encoded protein is linked with a ubiquitin-like protein, NEDD8, which can be conjugated to cellular proteins, such as Cdc53/culin.

**Synonyms:**

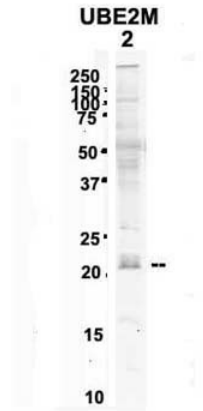
hUbc12; UBC-RS2; UBC12

**Protein Pathways:**

Ubiquitin mediated proteolysis

**Product images:**

WB Suggested Anti-UBE2M Antibody Titration:  
0.2-1 ug/ml  
Positive Control: 721\_B cell lysate UBE2M is supported by BioGPS gene expression data to be expressed in 721\_B



See Immunoblot 2 Data for more information.

**Sample Type:** 2. mouse brain extracts (80ug)  
**Primary Antibody Dilution:** 2ug/ml  
**Secondary Antibody:** IRDye 800CW goat anti-rabbit from Li-COR Bioscience  
**Secondary Antibody Dilution:** 1: 20,000  
**Image Submitted by:** Yuzhi Chen  
 University of Arkansas for Medical Science

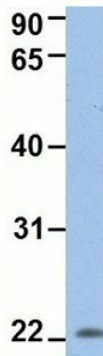
### UBE2M



Rabbit Anti-UBE2M  
 Sample Type: Human MCF7  
 Antibody Concentration: 1ug/mL

Host: Rabbit  
 Target Name: UBE2M  
 Sample Type: Human MCF7  
 Antibody Dilution: 1.0ug/ml UBE2M is supported by BioGPS gene expression data to be expressed in MCF7

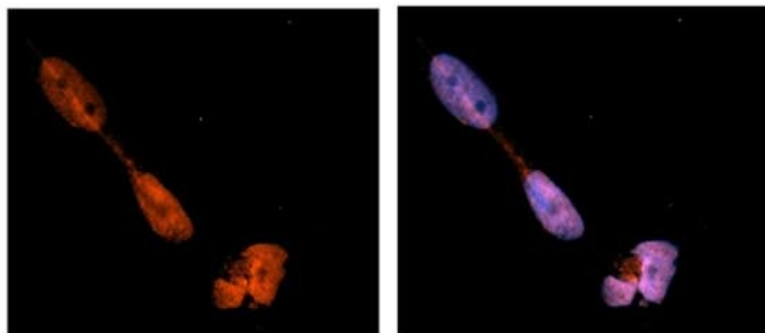
### UBE2M



Rabbit Anti-UBE2M  
 Sample Type: Human 721\_B  
 Antibody Concentration: 1ug/mL

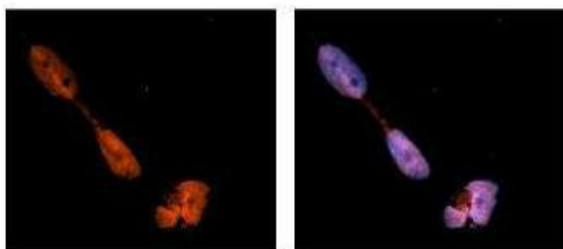
Host: Rabbit  
 Target Name: UBE2M  
 Sample Type: Human 721\_B  
 Antibody Dilution: 1.0ug/ml UBE2M is supported by BioGPS gene expression data to be expressed in 721\_B

## UBE2M



**Sample Type:** NT2 cells  
**Red:** Antibody  
**Blue:** DAPI  
**Primary Dilution:** 1 ug/50ul antibody  
**Secondary Antibody:** Alexa goat anti-rabbit 594  
**Image Submitted by:** Yuzhi Chen, University of Arkansas for Medical Sciences

### UBE2M



Antibody--RED  
 DAPI--Blue

Sample Type:  
 Human brain stem cells  
 Primary Antibody Dilution:  
 1:500  
 Secondary Antibody:  
 Goat anti-rabbit Alexa-Fluor 594  
 Secondary Antibody Dilution:  
 1:1000  
 Color/Signal Descriptions:  
 UBE2M: Red DAPI:Blue  
 Gene Name:  
 UBE2M  
 Submitted by:  
 Dr. Yuzhi Chen, University of Arkansas for Medical Science

See IHC 2 Data and Customer Feedback for more information