

Product datasheet for **TA356296**

UBE2L3 Rabbit Polyclonal Antibody

Product data:

Product Type:	Primary Antibodies
Applications:	IHC, WB
Reactivity:	Human
Host:	Rabbit
Clonality:	Polyclonal
Immunogen:	The immunogen is a synthetic peptide directed towards the C terminal region of human UBE2L3
Specificity:	Expected reactivity: Cow, Dog, Guinea Pig, Horse, Human, Mouse, Rabbit, Rat, Zebrafish Homology: Cow: 100%; Dog: 100%; Guinea Pig: 100%; Horse: 100%; Human: 100%; Mouse: 100%; Rabbit: 100%; Rat: 100%; Zebrafish: 93%
Formulation:	Liquid. Purified antibody supplied in 1x PBS buffer with 0.09% (w/v) sodium azide and 2% sucrose. <i>Note that this product is shipped as lyophilized powder to China customers.</i>
Concentration:	lot specific
Purification:	Affinity Purified
Conjugation:	Unconjugated
Storage:	For short term use, store at 2-8°C up to 1 week. For long term storage, store at -20°C in small aliquots to prevent freeze-thaw cycles.
Stability:	Shelf life: one year from despatch.
Predicted Protein Size:	17kDa
Gene Name:	ubiquitin conjugating enzyme E2 L3
Database Link:	NP_003338 Entrez Gene 7332 Human P68036



[View online »](#)

Background:

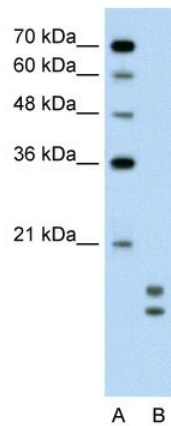
UBE2L3(ubiquitin-conjugating enzyme E2L 3) Antibody The modification of proteins with ubiquitin is an important cellular mechanism for targeting abnormal or short-lived proteins for degradation. Ubiquitination involves at least three classes of enzymes: ubiquitin-activating enzymes (E1s), ubiquitin-conjugating enzymes (E2s) and ubiquitin-protein ligases (E3s). This gene encodes a member of the E2 ubiquitin-conjugating enzyme family. This enzyme is demonstrated to participate in the ubiquitination of p53, c-Fos, and the NF-κB precursor p105 in vitro. Two alternatively spliced transcript variants encoding distinct isoforms have been found for this gene.

Synonyms:

E2-F1; L-UBC; UBCE7; UBCH7; UbcM4

Protein Pathways:

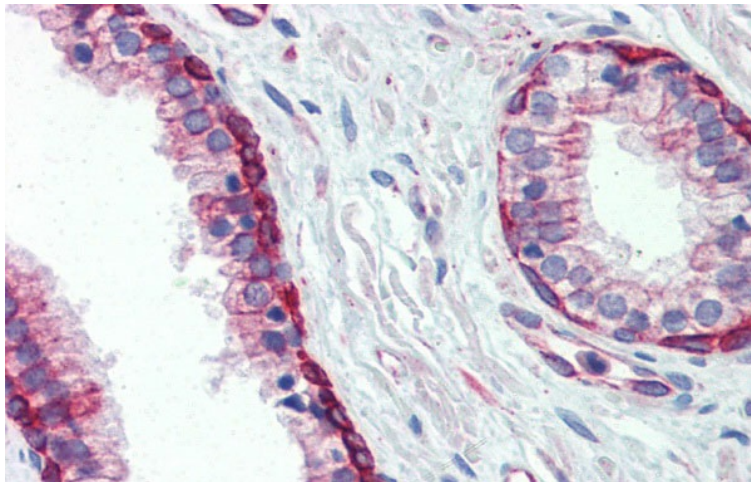
Parkinson's disease, Ubiquitin mediated proteolysis

Product images:


WB Suggested Anti-UBE2L3 Antibody Titration:

0.2-1 ug/ml

Positive Control: Jurkat cell lysate
There is BioGPS gene expression data showing that UBE2L3 is expressed in Jurkat



Immunohistochemistry with Human Prostate lysate tissue at an antibody concentration of 5.0ug/ml using anti-UBE2L3 antibody (TA356296)