

Product datasheet for **TA356289**

AMFR Rabbit Polyclonal Antibody

Product data:

Product Type:	Primary Antibodies
Applications:	WB
Reactivity:	Human
Host:	Rabbit
Clonality:	Polyclonal
Immunogen:	The immunogen is a synthetic peptide directed towards the C terminal region of human AMFR
Specificity:	Expected reactivity: Cow, Dog, Guinea Pig, Horse, Human, Mouse, Rabbit, Rat, Zebrafish Homology: Cow: 100%; Dog: 100%; Guinea Pig: 100%; Horse: 100%; Human: 100%; Mouse: 100%; Rabbit: 100%; Rat: 100%; Zebrafish: 93%
Formulation:	Liquid. Purified antibody supplied in 1x PBS buffer with 0.09% (w/v) sodium azide and 2% sucrose. <i>Note that this product is shipped as lyophilized powder to China customers.</i>
Concentration:	lot specific
Purification:	Protein A purified
Conjugation:	Unconjugated
Storage:	For short term use, store at 2-8°C up to 1 week. For long term storage, store at -20°C in small aliquots to prevent freeze-thaw cycles.
Stability:	Shelf life: one year from despatch.
Predicted Protein Size:	73kDa
Gene Name:	autocrine motility factor receptor
Database Link:	NP_038474 Entrez Gene 23608 Human Entrez Gene 267 Human Q9UKV5



[View online »](#)

Background:

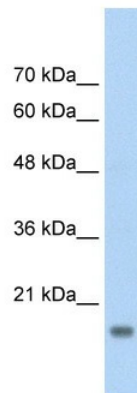
Autocrine motility factor is a tumor motility-stimulating protein secreted by tumor cells. AMFR is a glycosylated transmembrane protein and a receptor for autocrine motility factor. The receptor, which shows some sequence similarity to tumor protein p53, is localized to the leading and trailing edges of carcinoma cells. The Makorin ring finger protein-1 gene (MKRN1) is a highly transcribed, intron-containing source for a family of intronless mammalian genes encoding a novel class of zinc finger proteins. Phylogenetic analyses indicate that the MKRN1 gene is the ancestral founder of this gene family (Gray et al., 2000).[supplied by OMIM].

Synonyms:

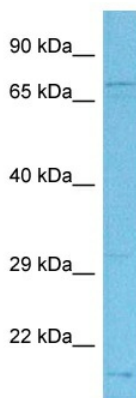
gp78; RNF45

Protein Families:

Druggable Genome

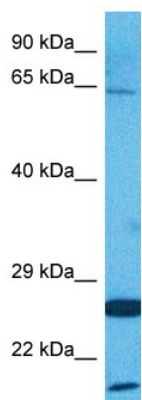
Product images:


WB Suggested Anti-AMFR Antibody Titration:
2.5ug/ml
Positive Control: HepG2 cell lysate
AMFR is supported by BioGPS gene expression data to be expressed in HepG2



Host: Rabbit
Target Name: AMFR
Sample Type: MDA-MB-435s Cell Lysate
Antibody Dilution: 1.0µg/ml

Host: Rabbit
Target Name: AMFR
Sample Tissue: Human MDA-MB-435s Whole Cell
Antibody Dilution: 1 ug/ml



Host: Rabbit
Target Name: AMFR
Sample Type: HepG2 Cell Lysate
Antibody Dilution: 1.0 μ g/ml

Host: Rabbit
Target Name: AMFR
Sample Tissue: Human HepG2 Whole Cell
Antibody Dilution: 1 μ g/ml