

Product datasheet for TA356287

UBE2D3 Rabbit Polyclonal Antibody

Product data:

Product Type:	Primary Antibodies
Applications:	WB
Reactivity:	Human
Host:	Rabbit
Clonality:	Polyclonal
Immunogen:	The immunogen is a synthetic peptide directed towards the N terminal region of human UBE2D3
Specificity:	Expected reactivity: Cow, Dog, Guinea Pig, Horse, Human, Mouse, Rabbit, Rat, Yeast, Zebrafish Homology: Cow: 100%; Dog: 100%; Guinea Pig: 100%; Horse: 100%; Human: 100%; Mouse: 100%; Rabbit: 92%; Rat: 100%; Yeast: 92%; Zebrafish: 92%
Formulation:	Liquid. Purified antibody supplied in 1x PBS buffer with 0.09% (w/v) sodium azide and 2% sucrose. <i>Note that this product is shipped as lyophilized powder to China customers.</i>
Concentration:	lot specific
Purification:	Affinity Purified
Conjugation:	Unconjugated
Storage:	For short term use, store at 2-8°C up to 1 week. For long term storage, store at -20°C in small aliquots to prevent freeze-thaw cycles.
Stability:	Shelf life: one year from despatch.
Predicted Protein Size:	17kDa
Gene Name:	ubiquitin conjugating enzyme E2 D3
Database Link:	NP_003331 Entrez Gene 7323 Human P61077



[View online »](#)

Background:

The modification of proteins with ubiquitin is an important cellular mechanism for targeting abnormal or short-lived proteins for degradation. Ubiquitination involves at least three classes of enzymes: ubiquitin-activating enzymes, or E1s, ubiquitin-conjugating enzymes, or E2s, and ubiquitin-protein ligases, or E3s. UBE2D3 is a member of the E2 ubiquitin-conjugating enzyme family. This enzyme functions in the ubiquitination of the tumor-suppressor protein p53, which is induced by an E3 ubiquitin-protein ligase. The modification of proteins with ubiquitin is an important cellular mechanism for targeting abnormal or short-lived proteins for degradation. Ubiquitination involves at least three classes of enzymes: ubiquitin-activating enzymes, or E1s, ubiquitin-conjugating enzymes, or E2s, and ubiquitin-protein ligases, or E3s. This gene encodes a member of the E2 ubiquitin-conjugating enzyme family. This enzyme functions in the ubiquitination of the tumor-suppressor protein p53, which is induced by an E3 ubiquitin-protein ligase. Multiple spliced transcript variants have been found for this gene, but the full-length nature of some variants has not been determined.

Synonyms:

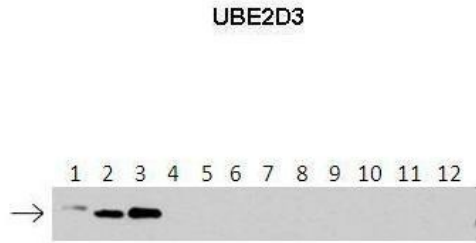
E2(17)KB3; MGC5416; MGC43926; UBC4/5; UBCH5C

Protein Pathways:

Ubiquitin mediated proteolysis

Product images:

WB Suggested Anti-UBE2D3 Antibody Titration:
0.2-1 ug/ml
ELISA Titer: 1:1562500
Positive Control: MCF7 cell lysate. UBE2D3 is strongly supported by BioGPS gene expression data to be expressed in MCF7



See Immunoblot 2 Data and customer Feedback for more Information

Lanes:

- 1: 40ng HIS-UBE2D1 protein
- 2: 40ng HIS-UBE2D2 protein
- 3: 40ng HIS-UBE2D3 protein
- 4: 40ng HIS-UBE2D4 protein
- 5: 40ng HIS-UBE2E1 protein
- 6: 40ng HIS-UBE2E2 protein
- 7: 40ng HIS-UBE2E3 protein
- 8: 40ng HIS-UBE2K protein
- 9: 40ng HIS-UBE2L3 protein
- 10: 40ng HIS-UBE2N protein
- 11: 40ng HIS-UBE2V1 protein
- 12: 40ng HIS-UBE2V2 protein.

Primary Antibody Dilution:

1:500

Secondary Antibody:

Anti-rabbit-HRP

Secondary Antibody Dilution:

1:50,000

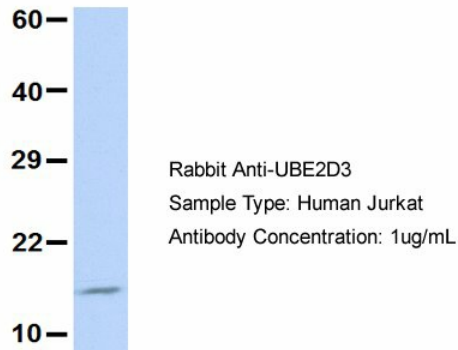
Gene Name:

UBE2D3

Submitted by:

Dr Chris Boutell. MRC-UoG Centre for Virus Research (CVR), UK.

UBE2D3



Host: Rabbit

Target Name: UBE2D3

Sample Type: Jurkat

Antibody Dilution: 1.0ug/ml UBE2D3 is strongly supported by BioGPS gene expression data to be expressed in Jurkat

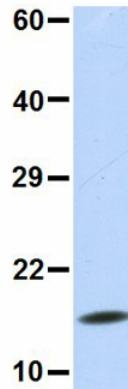
UBE2D3



Rabbit Anti-UBE2D3
 Sample Type: Human MCF7
 Antibody Concentration: 1ug/mL

Host: Rabbit
 Target Name: UBE2D3
 Sample Type: MCF7
 Antibody Dilution: 1.0ug/ml
 UBE2D3 is strongly supported by BioGPS gene expression data to be expressed in MCF7

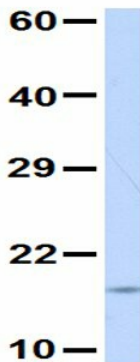
UBE2D3



Rabbit Anti-UBE2D3
 Sample Type: Human Fetal Lung
 Antibody Concentration: 1ug/mL

Host: Rabbit
 Target Name: UBE2D3
 Sample Type: Human Fetal Lung
 Antibody Dilution: 1.0ug/ml

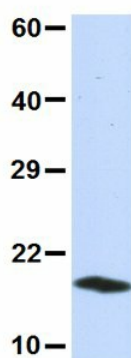
UBE2D3



Rabbit Anti-UBE2D3
 Sample Type: Human Fetal Liver
 Antibody Concentration: 1ug/mL

Host: Rabbit
 Target Name: UBE2D3
 Sample Type: Human Fetal Liver
 Antibody Dilution: 1.0ug/ml

UBE2D3



Rabbit Anti-UBE2D3
Sample Type: Human 293T
Antibody Concentration: 1ug/mL

Host: Rabbit
Target Name: UBE2D3
Sample Type: 293T
Antibody Dilution: 1.0ug/ml UBE2D3 is strongly supported by BioGPS gene expression data to be expressed in Human HEK293T cells