

## Product datasheet for **TA356282**

### RFPL4B Rabbit Polyclonal Antibody

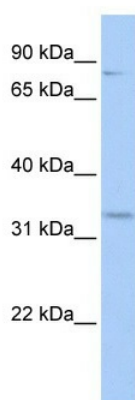
#### Product data:

Product Type:	Primary Antibodies
Applications:	WB
Reactivity:	Human
Host:	Rabbit
Clonality:	Polyclonal
Immunogen:	The immunogen is a synthetic peptide directed towards the middle region of human RFPL4B
Specificity:	<b>Expected reactivity:</b> Human <b>Homology:</b> Human: 100%
Formulation:	Liquid. Purified antibody supplied in 1x PBS buffer with 0.09% (w/v) sodium azide and 2% sucrose.
Concentration:	lot specific
Purification:	Affinity Purified
Conjugation:	Unconjugated
Storage:	For short term use, store at 2-8°C up to 1 week. For long term storage, store at -20°C in small aliquots to prevent freeze-thaw cycles.
Stability:	Shelf life: one year from despatch.
Predicted Protein Size:	30kDa
Gene Name:	ret finger protein like 4B
Database Link:	<a href="#">NP_001013756</a> <a href="#">Entrez Gene 442247 Human</a> <a href="#">Q6ZWI9</a>
Background:	RFPL4B contains 1 B30.2/SPRY domain and 1 RING-type zinc finger. The function of RFPL4B remains unknown.
Synonyms:	RNF211



[View online »](#)

Product images:



WB Suggested Anti-RFPL4B Antibody Titration:  
0.2-1 ug/ml  
ELISA Titer: 1:62500  
Positive Control: Hela cell lysate