

## Product datasheet for TA356281

### VPS8 Rabbit Polyclonal Antibody

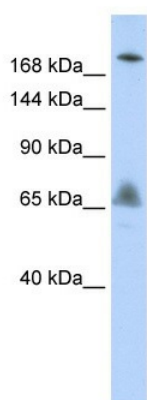
#### Product data:

Product Type:	Primary Antibodies
Applications:	WB
Reactivity:	Human
Host:	Rabbit
Clonality:	Polyclonal
Immunogen:	The immunogen is a synthetic peptide directed towards the N terminal region of human VPS8
Specificity:	<b>Expected reactivity:</b> Cow, Dog, Guinea Pig, Horse, Human, Mouse, Rabbit, Rat, Zebrafish <b>Homology:</b> Cow: 100%; Dog: 100%; Guinea Pig: 100%; Horse: 100%; Human: 100%; Mouse: 100%; Rabbit: 100%; Rat: 100%; Zebrafish: 86%
Formulation:	Liquid. Purified antibody supplied in 1x PBS buffer with 0.09% (w/v) sodium azide and 2% sucrose.
Concentration:	lot specific
Purification:	Affinity Purified
Conjugation:	Unconjugated
Storage:	For short term use, store at 2-8°C up to 1 week. For long term storage, store at -20°C in small aliquots to prevent freeze-thaw cycles.
Stability:	Shelf life: one year from despatch.
Predicted Protein Size:	162kDa
Gene Name:	VPS8, CORVET complex subunit
Database Link:	<a href="#">NP_001009921</a> <a href="#">Entrez Gene 23355 Human</a> <a href="#">B9EIQ1</a>
Background:	VPS8 belongs to the VPS8 family. It contains 1 RING-type zinc finger and 1 WD repeat. The functions of VPS8 remain unknown.
Synonyms:	FLJ32099; KIAA0804; OTTHUMP00000210436



[View online »](#)

Product images:



WB Suggested Anti-VPS8 Antibody Titration: 0.2-1 ug/ml  
ELISA Titer: 1:1562500  
Positive Control: HepG2 cell lysate