

Product datasheet for **TA356275**

MARCHF2 Rabbit Polyclonal Antibody

Product data:

Product Type:	Primary Antibodies
Applications:	WB
Reactivity:	Human
Host:	Rabbit
Clonality:	Polyclonal
Immunogen:	The immunogen is a synthetic peptide directed towards the C-terminal region of Human MARCH2
Specificity:	Expected reactivity: Guinea Pig, Human, Rabbit Homology: Guinea Pig: 90%; Human: 100%; Rabbit: 79%
Formulation:	Liquid. Purified antibody supplied in 1x PBS buffer with 0.09% (w/v) sodium azide and 2% sucrose. <i>Note that this product is shipped as lyophilized powder to China customers.</i>
Concentration:	lot specific
Purification:	Affinity Purified
Conjugation:	Unconjugated
Storage:	For short term use, store at 2-8°C up to 1 week. For long term storage, store at -20°C in small aliquots to prevent freeze-thaw cycles.
Stability:	Shelf life: one year from despatch.
Predicted Protein Size:	27kDa
Gene Name:	membrane associated ring-CH-type finger 2
Database Link:	NP_057580 Entrez Gene 51257 Human Q9P0N8
Background:	MARCH2 is a member of the MARCH family of membrane-bound E3 ubiquitin ligases. MARCH enzymes add ubiquitin to target lysines in substrate proteins, thereby signaling their vesicular transport between membrane compartments. MARCH2 reduces surface accumulation of several glycoproteins and appears to regulate early endosome-to-trans-Golgi network (TGN) trafficking.

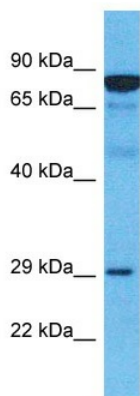


[View online »](#)

Synonyms: HSPC240; MARCH-II; RNF172

Protein Families: Druggable Genome, Transmembrane

Product images:



Host: Rabbit
Target Name: MARCH2
Sample Type: Esophagus Tumor lysates
Antibody Dilution: 1.0ug/ml