

Product datasheet for **TA356273**

MARCHF8 Rabbit Polyclonal Antibody

Product data:

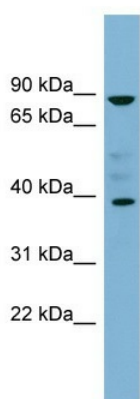
Product Type:	Primary Antibodies
Applications:	WB
Reactivity:	Human
Host:	Rabbit
Clonality:	Polyclonal
Immunogen:	The immunogen is a synthetic peptide directed towards the middle region of human MARCH8
Specificity:	Expected reactivity: Cow, Dog, Guinea Pig, Horse, Human, Mouse, Rabbit, Rat Homology: Cow: 100%; Dog: 85%; Guinea Pig: 100%; Horse: 93%; Human: 100%; Mouse: 93%; Rabbit: 91%; Rat: 93%
Formulation:	Liquid. Purified antibody supplied in 1x PBS buffer with 0.09% (w/v) sodium azide and 2% sucrose. <i>Note that this product is shipped as lyophilized powder to China customers.</i>
Concentration:	lot specific
Purification:	Affinity Purified
Conjugation:	Unconjugated
Storage:	For short term use, store at 2-8°C up to 1 week. For long term storage, store at -20°C in small aliquots to prevent freeze-thaw cycles.
Stability:	Shelf life: one year from despatch.
Predicted Protein Size:	33kDa
Gene Name:	membrane associated ring-CH-type finger 8
Database Link:	NP_001002265 Entrez Gene 220972 Human Q5T0T0
Background:	MARCH8 is a member of the MARCH family of membrane-bound E3 ubiquitin ligases (EC 6.3.2.19). MARCH enzymes add ubiquitin (see MIM 191339) to target lysines in substrate proteins, thereby signaling their vesicular transport between membrane compartments. M
Synonyms:	c-MIR; MARCH-VIII; MIR; RNF178



[View online »](#)

Protein Families: Druggable Genome, Transmembrane

Product images:



WB Suggested Anti-MARCH8 Antibody Titration:
0.2-1 ug/ml
ELISA Titer: 1:312500
Positive Control: NCI-H226 cell lysate