

Product datasheet for TA356271

MARCHF8 Rabbit Polyclonal Antibody

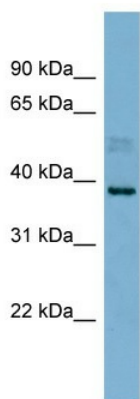
Product data:

Product Type:	Primary Antibodies
Applications:	WB
Reactivity:	Human
Host:	Rabbit
Clonality:	Polyclonal
Immunogen:	The immunogen is a synthetic peptide directed towards the N terminal region of human MARCH8
Specificity:	Expected reactivity: Cow, Dog, Human, Mouse, Rat Homology: Cow: 93%; Dog: 79%; Human: 100%; Mouse: 100%; Rat: 100%
Formulation:	Liquid. Purified antibody supplied in 1x PBS buffer with 0.09% (w/v) sodium azide and 2% sucrose.
Concentration:	lot specific
Purification:	Affinity Purified
Conjugation:	Unconjugated
Storage:	For short term use, store at 2-8°C up to 1 week. For long term storage, store at -20°C in small aliquots to prevent freeze-thaw cycles.
Stability:	Shelf life: one year from despatch.
Predicted Protein Size:	33kDa
Gene Name:	membrane associated ring-CH-type finger 8
Database Link:	NP_001002265 Entrez Gene 220972 Human Q5T0T0
Background:	MARCH8 is a member of the MARCH family of membrane-bound E3 ubiquitin ligases (EC 6.3.2.19). MARCH enzymes add ubiquitin (see MIM 191339) to target lysines in substrate proteins, thereby signaling their vesicular transport between membrane compartments. M
Synonyms:	c-MIR; MARCH-VIII; MIR; RNF178
Protein Families:	Druggable Genome, Transmembrane



[View online »](#)

Product images:



WB Suggested Anti-MARCH8 Antibody Titration:
0.2-1 ug/ml
ELISA Titer: 1:312500
Positive Control: PANC1 cell lysate
MARCH8 is supported by BioGPS gene expression data to be expressed in PANC1