

## Product datasheet for **TA356268**

### UBE3A Rabbit Polyclonal Antibody

#### Product data:

Product Type:	Primary Antibodies
Applications:	WB
Reactivity:	Human
Host:	Rabbit
Clonality:	Polyclonal
Immunogen:	The immunogen is a synthetic peptide directed towards the N terminal region of human UBE3A
Specificity:	<b>Expected reactivity:</b> Cow, Dog, Goat, Guinea Pig, Horse, Human, Mouse, Rabbit, Rat, Yeast, Zebrafish <b>Homology:</b> Cow: 93%; Dog: 93%; Goat: 90%; Guinea Pig: 93%; Horse: 93%; Human: 100%; Mouse: 93%; Rabbit: 93%; Rat: 93%; Yeast: 91%; Zebrafish: 100%
Formulation:	Liquid. Purified antibody supplied in 1x PBS buffer with 0.09% (w/v) sodium azide and 2% sucrose. <i>Note that this product is shipped as lyophilized powder to China customers.</i>
Concentration:	lot specific
Purification:	Affinity Purified
Conjugation:	Unconjugated
Storage:	For short term use, store at 2-8°C up to 1 week. For long term storage, store at -20°C in small aliquots to prevent freeze-thaw cycles.
Stability:	Shelf life: one year from despatch.
Predicted Protein Size:	101kDa
Gene Name:	ubiquitin protein ligase E3A
Database Link:	<a href="#">NP_000453</a> <a href="#">Entrez Gene 7337 Human</a> <a href="#">Q05086</a>



[View online »](#)

**Background:**

UBE3A is an E3 ubiquitin-protein ligase, part of the ubiquitin protein degradation system. This imprinted gene is maternally expressed in brain and biallelically expressed in other tissues. Maternally inherited deletion of this gene causes Angelman Syndrome, characterized by severe motor and intellectual retardation, ataxia, hypotonia, epilepsy, absence of speech, and characteristic facies. The protein also interacts with the E6 protein of human papillomavirus types 16 and 18, resulting in ubiquitination and proteolysis of tumor protein p53. Western blots using two different antibodies against two unique regions of this protein target confirm the same apparent molecular weight in our tests. This gene encodes an E3 ubiquitin-protein ligase, part of the ubiquitin protein degradation system. This imprinted gene is maternally expressed in brain and biallelically expressed in other tissues. Maternally inherited deletion of this gene causes Angelman Syndrome, characterized by severe motor and intellectual retardation, ataxia, hypotonia, epilepsy, absence of speech, and characteristic facies. The protein also interacts with the E6 protein of human papillomavirus types 16 and 18, resulting in ubiquitination and proteolysis of tumor protein p53. Alternative splicing of this gene results in three transcript variants encoding three isoforms with different N-termini. Additional transcript variants have been described, but their full length nature has not been determined.

**Synonyms:**

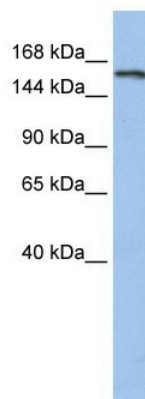
ANCR; AS; E6-AP; E6AP; EPVE6AP; FLJ26981; HPVE6A

**Protein Families:**

Druggable Genome

**Protein Pathways:**

Ubiquitin mediated proteolysis

**Product images:**

WB Suggested Anti-UBE3A Antibody Titration: 0.2-1 ug/ml  
ELISA Titer: 1:312500  
Positive Control: HeLa cell lysate UBE3A is strongly supported by BioGPS gene expression data to be expressed in Human HeLa cells