

## Product datasheet for **TA356265**

### TJP2 Rabbit Polyclonal Antibody

#### Product data:

Product Type:	Primary Antibodies
Applications:	WB
Reactivity:	Human
Host:	Rabbit
Clonality:	Polyclonal
Immunogen:	The immunogen is a synthetic peptide directed towards the middle region of human TJP2
Specificity:	<b>Expected reactivity:</b> Dog, Horse, Human, Rabbit, Rat <b>Homology:</b> Dog: 100%; Horse: 92%; Human: 100%; Rabbit: 93%; Rat: 79%
Formulation:	Liquid. Purified antibody supplied in 1x PBS buffer with 0.09% (w/v) sodium azide and 2% sucrose. <i>Note that this product is shipped as lyophilized powder to China customers.</i>
Concentration:	lot specific
Purification:	Affinity Purified
Conjugation:	Unconjugated
Storage:	For short term use, store at 2-8°C up to 1 week. For long term storage, store at -20°C in small aliquots to prevent freeze-thaw cycles.
Stability:	Shelf life: one year from despatch.
Predicted Protein Size:	134kDa
Gene Name:	tight junction protein 2
Database Link:	<a href="#">NP_004808</a> <a href="#">Entrez Gene 9414 Human</a> <a href="#">Q9UDY2</a>



[View online »](#)

**Background:**

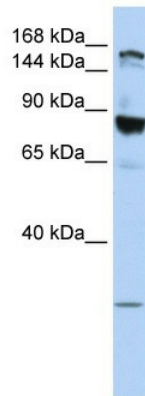
Tight junction proteins (TJPs) belong to a family of membrane-associated guanylate kinase (MAGUK) homologs that are involved in the organization of epithelial and endothelial intercellular junctions. TJPs bind to the cytoplasmic C termini of junctional transmembrane proteins and link them to the actin cytoskeleton. Tight junction proteins (TJPs) belong to a family of membrane-associated guanylate kinase (MAGUK) homologs that are involved in the organization of epithelial and endothelial intercellular junctions. TJPs bind to the cytoplasmic C termini of junctional transmembrane proteins and link them to the actin cytoskeleton. [supplied by OMIM]. Publication Note: This RefSeq record includes a subset of the publications that are available for this gene. Please see the Entrez Gene record to access additional publications. PRIMARYREFSEQ\_SPAN PRIMARY\_IDENTIFIER PRIMARY\_SPAN COMP 1-1975 BC027592.1 10-1984 1976-2543 L27476.1 1855-2422 2544-3080 BC028426.1 2440-2976 3081-4167 BC027592.1 3090-4176 4168-4601 L27476.1 4051-4484 4602-4618 BC028426.1 4056-4072

**Synonyms:**

MGC26306; X104; ZO-2; ZO2

**Protein Pathways:**

Tight junction, Vibrio cholerae infection

**Product images:**

WB Suggested Anti-TJP2 Antibody Titration: 0.2-1 ug/ml  
ELISA Titer: 1:1562500  
Positive Control: MCF7 cell lysate TJP2 is supported by BioGPS gene expression data to be expressed in MCF7