

## Product datasheet for **TA356264**

### TJP2 Rabbit Polyclonal Antibody

#### Product data:

Product Type:	Primary Antibodies
Applications:	WB
Reactivity:	Human
Host:	Rabbit
Clonality:	Polyclonal
Immunogen:	The immunogen is a synthetic peptide directed towards the C terminal region of human TJP2
Specificity:	<b>Expected reactivity:</b> Cow, Dog, Guinea Pig, Horse, Human, Mouse, Rabbit, Rat, Zebrafish <b>Homology:</b> Cow: 100%; Dog: 100%; Guinea Pig: 100%; Horse: 93%; Human: 100%; Mouse: 93%; Rabbit: 100%; Rat: 100%; Zebrafish: 82%
Formulation:	Liquid. Purified antibody supplied in 1x PBS buffer with 0.09% (w/v) sodium azide and 2% sucrose. <i>Note that this product is shipped as lyophilized powder to China customers.</i>
Concentration:	lot specific
Purification:	Affinity Purified
Conjugation:	Unconjugated
Storage:	For short term use, store at 2-8°C up to 1 week. For long term storage, store at -20°C in small aliquots to prevent freeze-thaw cycles.
Stability:	Shelf life: one year from despatch.
Predicted Protein Size:	118kDa
Gene Name:	tight junction protein 2
Database Link:	<a href="#">NP_963923</a> <a href="#">Entrez Gene 9414 Human</a> <a href="#">A2A3H9</a>



[View online »](#)

**Background:**

Tight junction proteins (TJPs) belong to a family of membrane-associated guanylate kinase (MAGUK) homologs that are involved in the organization of epithelial and endothelial intercellular junctions. TJPs bind to the cytoplasmic C termini of junctional transmembrane proteins and link them to the actin cytoskeleton. Tight junction proteins (TJPs) belong to a family of membrane-associated guanylate kinase (MAGUK) homologs that are involved in the organization of epithelial and endothelial intercellular junctions. TJPs bind to the cytoplasmic C termini of junctional transmembrane proteins and link them to the actin cytoskeleton. [supplied by OMIM]. Publication Note: This RefSeq record includes a subset of the publications that are available for this gene. Please see the Entrez Gene record to access additional publications. PRIMARYREFSEQ\_SPAN PRIMARY\_IDENTIFIER PRIMARY\_SPAN COMP 1-260 BC027592.1 10-269 261-1975 BC027592.1 270-1984 1976-2543 L27476.1 1855-2422 2544-3142 BC028426.1 2440-3038 3143-4160 L27476.1 3467-4484 4161-4177 BC028426.1 4056-4072

**Synonyms:**

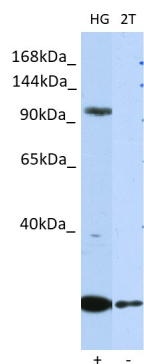
MGC26306; X104; ZO-2; ZO2

**Protein Pathways:**

Tight junction, Vibrio cholerae infection

**Product images:**


WB Suggested Anti-TJP2 Antibody Titration: 0.2-1 ug/ml  
ELISA Titer: 1:62500  
Positive Control: Jurkat cell lysate



Host: Rabbit  
 Target Name: TJP2  
 Positive Control: ~25ug HepG2 Cell Lysate (HG)  
 Negative Control: ~25ug 293T Cell Lysate (2T)  
 Antibody Concentration: 1ug/ml

Host: Rabbit  
 Target: TJP2  
 Positive control (+): HepG2 Cell Lysate (HG)  
 Negative control (-): 293T Cell Lysate (2T)  
 Antibody concentration: 1ug/ml