

Product datasheet for **TA356262**

TJAP1 Rabbit Polyclonal Antibody

Product data:

Product Type:	Primary Antibodies
Applications:	WB
Reactivity:	Human
Host:	Rabbit
Clonality:	Polyclonal
Immunogen:	The immunogen is a synthetic peptide directed towards the N terminal region of human TJAP1
Specificity:	Expected reactivity: Cow, Dog, Guinea Pig, Horse, Human, Mouse, Rabbit, Rat, Zebrafish Homology: Cow: 100%; Dog: 100%; Guinea Pig: 100%; Horse: 100%; Human: 100%; Mouse: 100%; Rabbit: 100%; Rat: 100%; Zebrafish: 86%
Formulation:	Liquid. Purified antibody supplied in 1x PBS buffer with 0.09% (w/v) sodium azide and 2% sucrose. <i>Note that this product is shipped as lyophilized powder to China customers.</i>
Concentration:	lot specific
Purification:	Affinity Purified
Conjugation:	Unconjugated
Storage:	For short term use, store at 2-8°C up to 1 week. For long term storage, store at -20°C in small aliquots to prevent freeze-thaw cycles.
Stability:	Shelf life: one year from despatch.
Predicted Protein Size:	15kDa
Gene Name:	tight junction associated protein 1
Database Link:	NP_001139488 Entrez Gene 93643 Human Q5JTD0
Background:	TJAP1 interacts with DLG1. The exact function of TJAP1 remains unknown.
Synonyms:	DKFZp686F06131; OTTHUMP00000016454; OTTHUMP00000016455; OTTHUMP00000016458; PILT; TJP4
Protein Pathways:	Tight junction



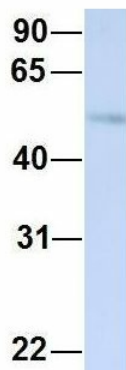
[View online »](#)

Product images:



WB Suggested Anti-TJAP1 Antibody Titration: 0.2-1 ug/ml
 ELISA Titer: 1:1562500
 Positive Control: 293T cell lysate TJAP1 is strongly supported by BioGPS gene expression data to be expressed in Human HEK293T cells

TJAP1



Rabbit Anti-TJAP1
 Sample Type: Human Adult Placenta
 Antibody Concentration: 1ug/mL

Host: Rabbit
 Target Name: CHAD
 Sample Type: Human Adult Placenta
 Antibody Dilution: 1.0ug/ml

TJAP1



Rabbit Anti-TJAP1
Sample Type: Human Fetal Heart
Antibody Concentration: 1ug/mL

Host: Rabbit
Target Name: TJAP1
Sample Type: Human Fetal Heart
Antibody Dilution: 1.0ug/ml

TJAP1



Rabbit Anti-TJAP1
Sample Type: Human Fetal Lung
Antibody Concentration: 1ug/mL

Host: Rabbit
Target Name: TJAP1
Sample Type: Human Fetal Lung
Antibody Dilution: 1.0ug/ml