

## Product datasheet for **TA356261**

### CRB3 Rabbit Polyclonal Antibody

#### Product data:

Product Type:	Primary Antibodies
Applications:	WB
Reactivity:	Human
Host:	Rabbit
Clonality:	Polyclonal
Specificity:	<b>Expected reactivity:</b> Human <b>Homology:</b> Human: 100%
Formulation:	Liquid. Purified antibody supplied in 1x PBS buffer with 0.09% (w/v) sodium azide and 2% sucrose. <i>Note that this product is shipped as lyophilized powder to China customers.</i>
Concentration:	lot specific
Purification:	Affinity Purified
Conjugation:	Unconjugated
Storage:	For short term use, store at 2-8°C up to 1 week. For long term storage, store at -20°C in small aliquots to prevent freeze-thaw cycles.
Stability:	Shelf life: one year from despatch.
Predicted Protein Size:	10kDa
Gene Name:	crumbs 3, cell polarity complex component
Database Link:	<a href="#">NP_631900</a> <a href="#">Entrez Gene 92359 Human</a> <a href="#">Q9BUF7</a>
Background:	This gene encodes a member of the Crumbs family of proteins. This protein may play a role in epithelial cell polarity and is associated with tight junctions at the apical surface of epithelial cells. Alternate transcriptional splice variants, encoding different isoforms, have been characterized.
Synonyms:	MGC17303
Protein Families:	Transmembrane
Protein Pathways:	Tight junction



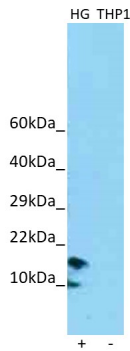
[View online »](#)

**Product images:**



Rabbit Anti-CRB3 Antibody  
 Catalog Number: ARP42931  
 Lot Number: QC13366  
 Lane: HepG2 Cell Lysate  
  
 Antibody Titration: 1.0µg/ml  
 Gel Concentration: 10-20%

WB Suggested Anti-CRB3 Antibody  
 Titration: 1.0 ug/ml  
 Positive Control: HepG2 Whole Cell



Host: Rabbit  
 Target Name: CRB3  
 Positive Control: ~25ug HepG2 Cell Lysate (HG)  
 Negative Control: ~25ug THP1 Cell Lysate (THP1)  
 Antibody Concentration: 1ug/ml

Host: Rabbit  
 Target: CRB3  
 Positive control (+): HepG2 Cell Lysate (HG)  
 Negative control (-): THP1 Cell Lysate (N30)  
 Antibody concentration: 1ug/ml