

## Product datasheet for **TA356259**

### **PATJ Rabbit Polyclonal Antibody**

#### **Product data:**

Product Type:	Primary Antibodies
Applications:	WB
Reactivity:	Human
Host:	Rabbit
Clonality:	Polyclonal
Immunogen:	The immunogen is a synthetic peptide directed towards the N terminal region of human INADL
Specificity:	<b>Expected reactivity:</b> Cow, Dog, Guinea Pig, Horse, Human, Mouse, Rabbit, Rat <b>Homology:</b> Cow: 100%; Dog: 100%; Guinea Pig: 86%; Horse: 100%; Human: 100%; Mouse: 86%; Rabbit: 93%; Rat: 93%
Formulation:	Liquid. Purified antibody supplied in 1x PBS buffer with 0.09% (w/v) sodium azide and 2% sucrose. <i>Note that this product is shipped as lyophilized powder to China customers.</i>
Concentration:	lot specific
Purification:	Affinity Purified
Conjugation:	Unconjugated
Storage:	For short term use, store at 2-8°C up to 1 week. For long term storage, store at -20°C in small aliquots to prevent freeze-thaw cycles.
Stability:	Shelf life: one year from despatch.
Predicted Protein Size:	196kDa
Gene Name:	PATJ, crumbs cell polarity complex component
Database Link:	<a href="#">NP_795352</a> <a href="#">Entrez Gene 10207 Human</a> <a href="#">Q8NI35</a>



[View online »](#)

**Background:**

This gene encodes a protein with multiple PDZ domains. PDZ domains mediate protein-protein interactions, and proteins with multiple PDZ domains often organize multimeric complexes at the plasma membrane. This protein localizes to tight junctions and to the apical membrane of epithelial cells. A similar protein in *Drosophila* is a scaffolding protein which tethers several members of a multimeric signaling complex in photoreceptors.

**Protein Families:**

Druggable Genome

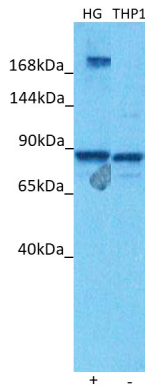
**Protein Pathways:**

Tight junction

**Product images:**



WB Suggested Anti-INADL Antibody Titration: 0.2-1 ug/ml  
 ELISA Titer: 1:12500  
 Positive Control: 293T cell lysate



Host: Rabbit  
 Target Name: INADL  
 Positive Control: ~25ug HepG2 Cell Lysate (HG)  
 Negative Control: ~25ug THP1 Cell Lysate (THP1)  
 Antibody Concentration: 5ug/ml

Host: Rabbit  
 Target: INADL  
 Positive control (+): HepG2 Cell Lysate (HG)  
 Negative control (-): THP1 Cell Lysate (N30)  
 Antibody concentration: 5ug/ml