

Product datasheet for **TA356256**

ESAM Rabbit Polyclonal Antibody

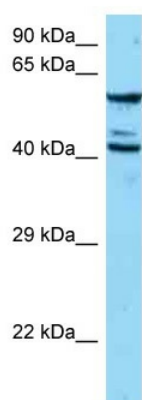
Product data:

Product Type:	Primary Antibodies
Applications:	WB
Reactivity:	Human
Host:	Rabbit
Clonality:	Polyclonal
Specificity:	Expected reactivity: Human Homology: Human: 100%
Formulation:	Liquid. Purified antibody supplied in 1x PBS buffer with 0.09% (w/v) sodium azide and 2% sucrose. <i>Note that this product is shipped as lyophilized powder to China customers.</i>
Concentration:	lot specific
Purification:	Affinity Purified
Conjugation:	Unconjugated
Storage:	For short term use, store at 2-8°C up to 1 week. For long term storage, store at -20°C in small aliquots to prevent freeze-thaw cycles.
Stability:	Shelf life: one year from despatch.
Predicted Protein Size:	41kDa
Gene Name:	endothelial cell adhesion molecule
Database Link:	NP_620411 Entrez Gene 90952 Human Q96AP7
Background:	ESAM can mediate aggregation most likely through a homophilic molecular interaction.
Synonyms:	2310008D05Rik; W117m
Protein Families:	Druggable Genome, Transmembrane
Protein Pathways:	Cell adhesion molecules (CAMs), Leukocyte transendothelial migration



[View online »](#)

Product images:



WB Suggested Anti-ESAM Antibody
Titration: 1.0 ug/ml
Positive Control: Jurkat Whole Cell