

Product datasheet for **TA356255**

GTPBP10 Rabbit Polyclonal Antibody

Product data:

Product Type:	Primary Antibodies
Applications:	IHC, WB
Reactivity:	Human
Host:	Rabbit
Clonality:	Polyclonal
Immunogen:	The immunogen is a synthetic peptide directed towards the middle region of human GTPBP10
Specificity:	Expected reactivity: Cow, Dog, Guinea Pig, Horse, Human, Mouse, Pig, Rabbit, Rat, Zebrafish Homology: Cow: 92%; Dog: 92%; Guinea Pig: 93%; Horse: 100%; Human: 100%; Mouse: 100%; Pig: 100%; Rabbit: 100%; Rat: 100%; Zebrafish: 85%
Formulation:	Liquid. Purified antibody supplied in 1x PBS buffer with 0.09% (w/v) sodium azide and 2% sucrose.
Concentration:	lot specific
Purification:	Affinity Purified
Conjugation:	Unconjugated
Storage:	For short term use, store at 2-8°C up to 1 week. For long term storage, store at -20°C in small aliquots to prevent freeze-thaw cycles.
Stability:	Shelf life: one year from despatch.
Predicted Protein Size:	43kDa
Gene Name:	GTP binding protein 10
Database Link:	NP_149098 Entrez Gene 85865 Human A4D1E9



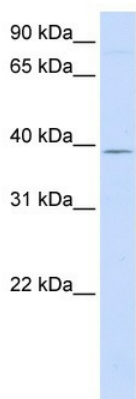
[View online »](#)

Background:

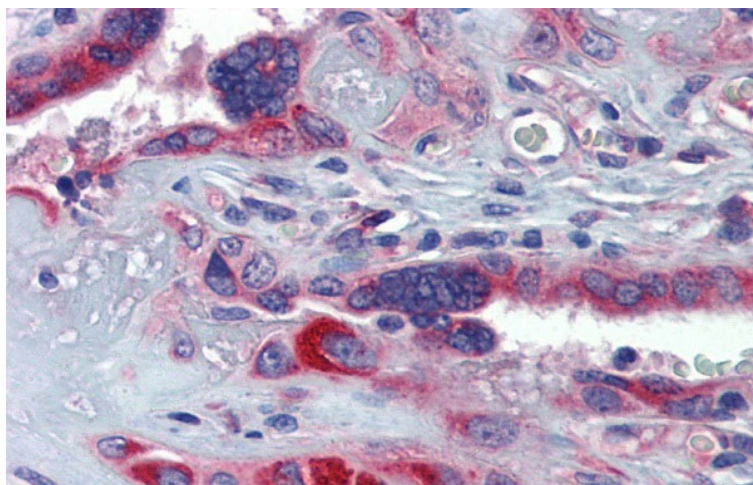
Small G proteins, such as GTPBP10, act as molecular switches that play crucial roles in the regulation of fundamental cellular processes such as protein synthesis, nuclear transport, membrane trafficking, and signal transduction. Small G proteins, such as GTPBP10, act as molecular switches that play crucial roles in the regulation of fundamental cellular processes such as protein synthesis, nuclear transport, membrane trafficking, and signal transduction (Hirano et al., 2006 [PubMed 17054726]). [supplied by OMIM].

Synonyms:

DKFZp686A10121; FLJ38242; MGC104191; ObgH2; UG0751c10

Product images:


WB Suggested Anti-GTPBP10 Antibody Titration: 1 ug/ml
Positive Control: 721_B cell lysate GTPBP10 is supported by BioGPS gene expression data to be expressed in 721_B



Immunohistochemistry with Human Placenta lysate tissue at an antibody concentration of 5.0ug/ml using anti-GTPBP10 antibody (TA356255)