

## Product datasheet for **TA356253**

### Pard6b Rabbit Polyclonal Antibody

#### Product data:

Product Type:	Primary Antibodies
Applications:	IHC, WB
Reactivity:	Human, Mouse
Host:	Rabbit
Clonality:	Polyclonal
Immunogen:	The immunogen is a synthetic peptide directed towards the N-terminal region of MOUSE Pard6b
Specificity:	<b>Expected reactivity:</b> Cow, Dog, Guinea Pig, Horse, Human, Mouse, Rabbit, Rat, Zebrafish <b>Homology:</b> Cow: 86%; Dog: 100%; Guinea Pig: 100%; Horse: 93%; Human: 100%; Mouse: 100%; Rabbit: 77%; Rat: 100%; Zebrafish: 85%
Formulation:	Liquid. Purified antibody supplied in 1x PBS buffer with 0.09% (w/v) sodium azide and 2% sucrose. <i>Note that this product is shipped as lyophilized powder to China customers.</i>
Concentration:	lot specific
Purification:	Affinity Purified
Conjugation:	Unconjugated
Storage:	For short term use, store at 2-8°C up to 1 week. For long term storage, store at -20°C in small aliquots to prevent freeze-thaw cycles.
Stability:	Shelf life: one year from despatch.
Predicted Protein Size:	40kDa
Gene Name:	par-6 family cell polarity regulator beta
Database Link:	<a href="#">NP_067384</a> <a href="#">Entrez Gene 84612 Human</a> <a href="#">Entrez Gene 58220 Mouse</a> <a href="#">Q9JK83</a>



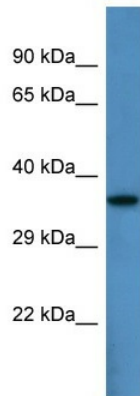
[View online »](#)

**Background:**

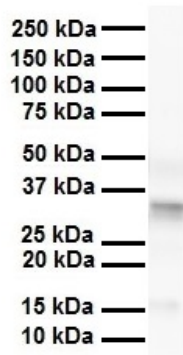
Pard6b is a adapter protein involved in asymmetrical cell division and cell polarization processes. It is probably involved in formation of epithelial tight junctions. Association with PARD3 may prevent the interaction of PARD3 with F11R/JAM1, thereby preventing tight junction assembly. The PARD6-PARD3 complex links GTP-bound Rho small GTPases to atypical protein kinase C proteins.

**Synonyms:**

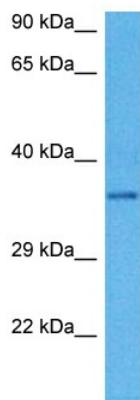
PAR-6B; PAR6B

**Product images:**


Host: Rabbit  
 Target Name: Pard6b  
 Sample Type: Mouse Heart lysates  
 Antibody Dilution: 1.0ug/ml

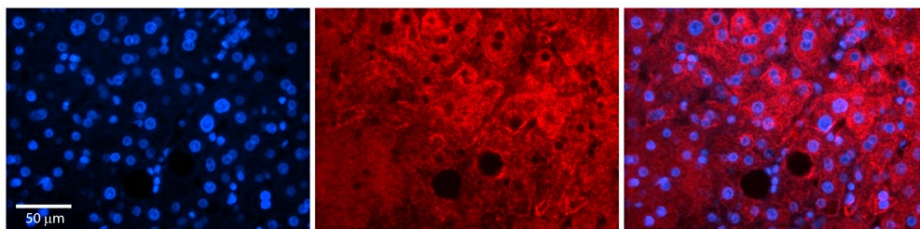


WB Suggested Anti-Pard6b antibody Titration: 1 ug/mL  
 Sample Type: Human liver



Host: Rabbit  
 Target Name: Pard6g  
 Sample Type: Mouse Heart Lysate  
 Antibody Dilution: 1.0µg/ml

Host: Mouse  
 Target Name: PARD6G  
 Sample Tissue: Mouse Heart  
 Antibody Dilution: 1ug/ml



Rabbit Anti-Pard6b Antibody  
 Catalog Number: TA356253  
 Formalin Fixed Paraffin Embedded Tissue:  
 Human Adult liver  
 Observed Staining: Cytoplasmic,Membrane  
 Primary Antibody Concentration: 1:600  
 Secondary Antibody: Donkey anti-Rabbit-Cy2/3  
 Secondary Antibody Concentration: 1:200  
 Magnification: 20X  
 Exposure Time: 0.5-2.0 sec  
 Protocol located in Reviews and Data.