

## Product datasheet for **TA356250**

### **PARD3 Rabbit Polyclonal Antibody**

#### **Product data:**

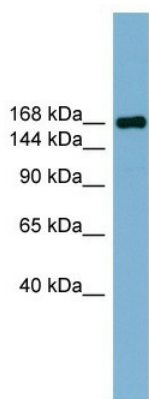
Product Type:	Primary Antibodies
Applications:	IHC, WB
Reactivity:	Human
Host:	Rabbit
Clonality:	Polyclonal
Immunogen:	The immunogen is a synthetic peptide directed towards the middle region of human PARD3
Specificity:	<b>Expected reactivity:</b> Guinea Pig, Human <b>Homology:</b> Guinea Pig: 79%; Human: 100%
Formulation:	Liquid. Purified antibody supplied in 1x PBS buffer with 0.09% (w/v) sodium azide and 2% sucrose. <i>Note that this product is shipped as lyophilized powder to China customers.</i>
Concentration:	lot specific
Purification:	Affinity Purified
Conjugation:	Unconjugated
Storage:	For short term use, store at 2-8°C up to 1 week. For long term storage, store at -20°C in small aliquots to prevent freeze-thaw cycles.
Stability:	Shelf life: one year from despatch.
Predicted Protein Size:	151kDa
Gene Name:	par-3 family cell polarity regulator
Database Link:	<a href="#">NP_062565</a> <a href="#">Entrez Gene 56288 Human</a> <a href="#">Q8TEW0</a>
Background:	PARD proteins, which were first identified in <i>C. elegans</i> , are essential for asymmetric cell division and polarized growth, whereas CDC42 (MIM 116952) mediates the establishment of cell polarity. The CDC42 GTPase, which is controlled by nucleotide exchange
Synonyms:	ASIP; Baz; Bazooka; FLJ21015; PAR-3; PAR3; PAR3-alpha; PAR3A; PAR3alpha; PARD-3; PARD3A; SE2-5L16; SE2-5LT1; SE2-5T2



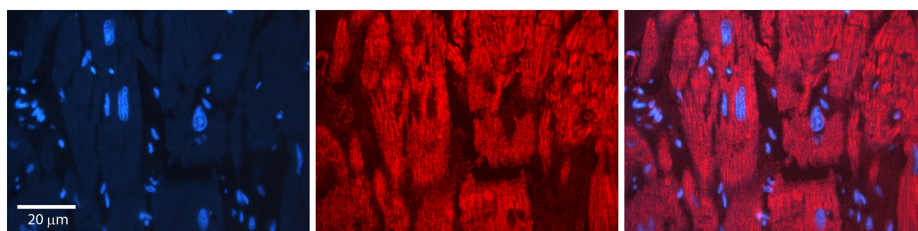
[View online »](#)

**Protein Pathways:** Adherens junction, Chemokine signaling pathway, Endocytosis, Neuroactive ligand-receptor interaction, Tight junction

## Product images:



WB Suggested Anti-PARD3 Antibody Titration:  
0.2-1 ug/ml  
Positive Control: Human Thymus



Rabbit Anti-PARD3 Antibody  
Catalog Number: TA356250  
Formalin Fixed Paraffin Embedded Tissue:  
Human heart Tissue  
Observed Staining: Cytoplasmic  
Primary Antibody Concentration: 1:100  
Other Working Concentrations: 1:600  
Secondary Antibody: Donkey anti-Rabbit-Cy3  
Secondary Antibody Concentration: 1:200  
Magnification: 20X  
Exposure Time: 0.5-2.0 sec