

## Product datasheet for **TA356248**

### **PARD6B Rabbit Polyclonal Antibody**

#### **Product data:**

Product Type:	Primary Antibodies
Applications:	WB
Reactivity:	Human, Mouse
Host:	Rabbit
Clonality:	Polyclonal
Immunogen:	The immunogen is a synthetic peptide directed towards the N terminal region of human PARD6B
Specificity:	<b>Expected reactivity:</b> Cow, Dog, Guinea Pig, Horse, Human, Mouse, Rabbit, Rat, Zebrafish <b>Homology:</b> Cow: 100%; Dog: 79%; Guinea Pig: 100%; Horse: 100%; Human: 100%; Mouse: 100%; Rabbit: 100%; Rat: 100%; Zebrafish: 79%
Formulation:	Liquid. Purified antibody supplied in 1x PBS buffer with 0.09% (w/v) sodium azide and 2% sucrose. <i>Note that this product is shipped as lyophilized powder to China customers.</i>
Concentration:	lot specific
Purification:	Affinity Purified
Conjugation:	Unconjugated
Storage:	For short term use, store at 2-8°C up to 1 week. For long term storage, store at -20°C in small aliquots to prevent freeze-thaw cycles.
Stability:	Shelf life: one year from despatch.
Predicted Protein Size:	41kDa
Gene Name:	par-6 family cell polarity regulator beta
Database Link:	<a href="#">NP_115910</a> <a href="#">Entrez Gene 58220 Mouse</a> <a href="#">Entrez Gene 84612 Human</a> <a href="#">Q9BYG5</a>



[View online »](#)

**Background:**

This gene is a member of the PAR6 family and encodes a protein with a PSD95/Discs-large/ZO1 (PDZ) domain, an OPR domain and a semi-Cdc42/Rac interactive binding (CRIB) domain. This cytoplasmic protein is involved in asymmetrical cell division and cell polarization processes as a member of a multi-protein complex. This gene is a member of the PAR6 family and encodes a protein with a PSD95/Discs-large/ZO1 (PDZ) domain, an OPR domain and a semi-Cdc42/Rac interactive binding (CRIB) domain. This cytoplasmic protein is involved in asymmetrical cell division and cell polarization processes as a member of a multi-protein complex.

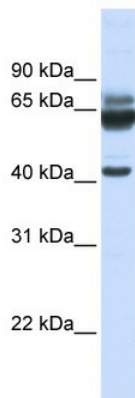
**Synonyms:**

PAR-6B; PAR6B

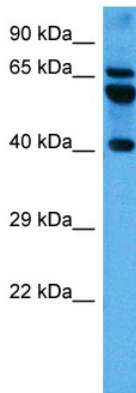
**Protein Pathways:**

Endocytosis, Tight junction

**Product images:**



WB Suggested Anti-PARD6B Antibody Titration:  
0.2-1 ug/ml  
ELISA Titer: 1:312500  
Positive Control: 721\_B cell lysate  
PARD6B is strongly supported by BioGPS gene expression data to be expressed in Human 721\_B cells



Host: Rabbit  
Target Name: Pard6b  
Sample Type: Mouse Brain Lysate  
Antibody Dilution: 1.0µg/ml

Host: Mouse  
Target Name: PARD6B  
Sample Tissue: Mouse Brain  
Antibody Dilution: 1ug/ml