

## Product datasheet for TA356247

### Cingulin (CGN) Rabbit Polyclonal Antibody

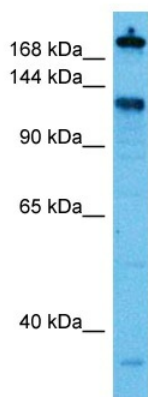
#### Product data:

Product Type:	Primary Antibodies
Applications:	WB
Reactivity:	Human
Host:	Rabbit
Clonality:	Polyclonal
Immunogen:	The immunogen is a synthetic peptide directed towards the C terminal region of human CGN
Specificity:	<b>Expected reactivity:</b> Cow; Dog; Guinea Pig; Horse; Human; Mouse; Rabbit; Rat <b>Homology:</b> Cow: 100%; Dog: 100%; Guinea Pig: 100%; Horse: 93%; Human: 100%; Mouse: 100%; Rabbit: 93%; Rat: 100%
Formulation:	Liquid. Purified antibody supplied in 1x PBS buffer with 0.09% (w/v) sodium azide and 2% sucrose. <i>Note that this product is shipped as lyophilized powder to China customers.</i>
Concentration:	lot specific
Purification:	Affinity purified
Conjugation:	Unconjugated
Storage:	For short term use, store at 2-8°C up to 1 week. For long term storage, store at -20°C in small aliquots to prevent freeze-thaw cycles.
Stability:	Shelf life: one year from despatch.
Predicted Protein Size:	1197
Gene Name:	cingulin
Database Link:	<a href="#">Entrez Gene 57530 Human Q9P2M7</a>
Background:	Probably plays a role in the formation and regulation of the tight junction (TJ) paracellular permeability barrier.
Synonyms:	cingulin; DKFZp779N1112; FLJ39281; KIAA1319



[View online »](#)

## Product images:



Host: Rabbit  
Target Name: CGN  
Sample Type: THP-1 Cell Lysate  
Antibody Dilution: 1.0 $\mu$ g/ml

Host: Rabbit  
Target Name: CGN  
Sample Tissue: Human THP-1 Whole Cell lysates  
Antibody Dilution: 1 $\mu$ g/ml