

Product datasheet for **TA356246**

PALS1 Rabbit Polyclonal Antibody

Product data:

Product Type:	Primary Antibodies
Applications:	WB
Reactivity:	Human
Host:	Rabbit
Clonality:	Polyclonal
Immunogen:	The immunogen is a synthetic peptide directed towards the N terminal region of human MPP5
Specificity:	Expected reactivity: Cow, Dog, Guinea Pig, Horse, Human, Mouse, Rabbit, Rat, Zebrafish Homology: Cow: 100%; Dog: 100%; Guinea Pig: 100%; Horse: 100%; Human: 100%; Mouse: 100%; Rabbit: 100%; Rat: 100%; Zebrafish: 80%
Formulation:	Liquid. Purified antibody supplied in 1x PBS buffer with 0.09% (w/v) sodium azide and 2% sucrose. <i>Note that this product is shipped as lyophilized powder to China customers.</i>
Concentration:	lot specific
Purification:	Affinity Purified
Conjugation:	Unconjugated
Storage:	For short term use, store at 2-8°C up to 1 week. For long term storage, store at -20°C in small aliquots to prevent freeze-thaw cycles.
Stability:	Shelf life: one year from despatch.
Predicted Protein Size:	77kDa
Gene Name:	membrane palmitoylated protein 5
Database Link:	NP_071919 Entrez Gene 64398 Human Q8N3R9



[View online »](#)

Background:

Members of the peripheral membrane-associated guanylate kinase (MAGUK) family function in tumor suppression and receptor clustering by forming multiprotein complexes containing distinct sets of transmembrane, cytoskeletal, and cytoplasmic signaling proteins. All MAGUKs contain a PDZ-SH3-GUK core and are divided into 4 subfamilies, DLG-like, ZO1-like, p55-like, and LIN2-like, based on their size and the presence of additional domains. MPP5 is a member of the p55-like MAGUK subfamily. Members of the peripheral membrane-associated guanylate kinase (MAGUK) family function in tumor suppression and receptor clustering by forming multiprotein complexes containing distinct sets of transmembrane, cytoskeletal, and cytoplasmic signaling proteins. All MAGUKs contain a PDZ-SH3-GUK core and are divided into 4 subfamilies, DLG-like (see DLG1; MIM 601014), ZO1-like (see TJP1; MIM 601009), p55-like (see MPP1; MIM 305360), and LIN2-like (see CASK; MIM 300172), based on their size and the presence of additional domains (Tseng et al., 2001 [PubMed 11311936]). MPP5 is a member of the p55-like MAGUK subfamily. [supplied by OMIM]. Publication Note: This RefSeq record includes a subset of the publications that are available for this gene. Please see the Entrez Gene record to access additional publications.

Synonyms:

FLJ12615; PALS1; stardust

Protein Families:

Druggable Genome

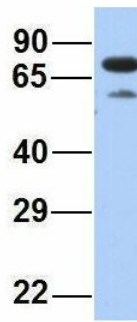
Protein Pathways:

Tight junction

Product images:

WB Suggested Anti-MPP5 Antibody Titration: 0.2-1 ug/ml
ELISA Titer: 1:312500
Positive Control: Jurkat cell lysate

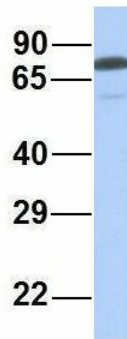
MPP5



Rabbit Anti-MPP5
Sample Type: Human Fetal Heart
Antibody Concentration: 1ug/mL

Host: Rabbit
Target Name: MPP5
Sample Type: Human Fetal Heart
Antibody Dilution: 1.0ug/ml

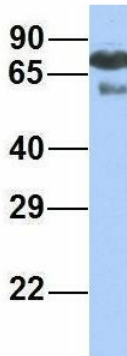
MPP5



Rabbit Anti-MPP5
Sample Type: Human Fetal Liver
Antibody Concentration: 1ug/mL

Host: Rabbit
Target Name: MPP5
Sample Type: Human Fetal Liver
Antibody Dilution: 1.0ug/ml

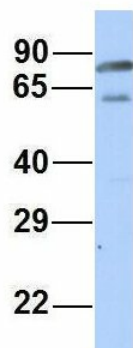
MPP5



Rabbit Anti-MPP5
Sample Type: Human Fetal Lung
Antibody Concentration: 1ug/mL

Host: Rabbit
Target Name: MPP5
Sample Type: Human Fetal Lung
Antibody Dilution: 1.0ug/ml

MPP5



Rabbit Anti-MPP5
Sample Type: Human Adult Placenta
Antibody Concentration: 1ug/mL

Host: Rabbit
Target Name: MPP5
Sample Type: Human Adult Placenta
Antibody Dilution: 1.0ug/ml