

Product datasheet for **TA356245**

PARD3 Rabbit Polyclonal Antibody

Product data:

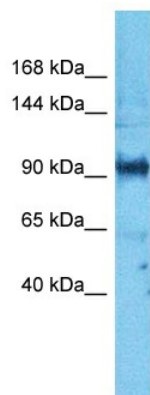
Product Type:	Primary Antibodies
Applications:	IHC, WB
Reactivity:	Human
Host:	Rabbit
Clonality:	Polyclonal
Immunogen:	The immunogen is a synthetic peptide directed towards the N-terminal region of Human PARD3
Specificity:	Expected reactivity: Cow, Guinea Pig, Human, Mouse, Rabbit, Rat, Zebrafish Homology: Cow: 100%; Guinea Pig: 100%; Human: 100%; Mouse: 100%; Rabbit: 100%; Rat: 100%; Zebrafish: 86%
Formulation:	Liquid. Purified antibody supplied in 1x PBS buffer with 0.09% (w/v) sodium azide and 2% sucrose. <i>Note that this product is shipped as lyophilized powder to China customers.</i>
Concentration:	lot specific
Purification:	Affinity purified
Conjugation:	Unconjugated
Storage:	For short term use, store at 2-8°C up to 1 week. For long term storage, store at -20°C in small aliquots to prevent freeze-thaw cycles.
Stability:	Shelf life: one year from despatch.
Predicted Protein Size:	110kDa
Gene Name:	par-3 family cell polarity regulator
Database Link:	Entrez Gene 56288 Human Q8TEW0-10
Background:	This gene encodes a member of the PARD protein family. PARD family members interact with other PARD family members and other proteins; they affect asymmetrical cell division and direct polarized cell growth. Multiple alternatively spliced transcript variants have been described for this gene.



[View online »](#)

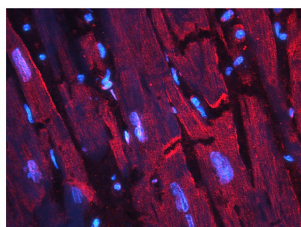
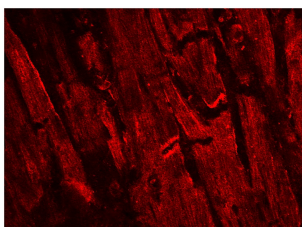
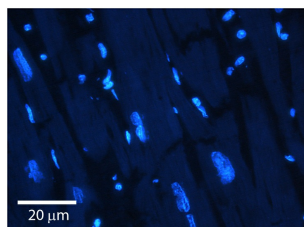
Synonyms: ASIP; Baz; Bazooka; FLJ21015; PAR-3; PAR3; PAR3-alpha; PAR3A; PAR3alpha; PARD-3; PARD3A; SE2-5L16; SE2-5LT1; SE2-5T2

Product images:



Host: Rabbit
Target Name: PARD3
Sample Tissue: PANC1 Cell Lysate
Antibody Dilution: 1.0µg/ml

Host: Rabbit
Target Name: PARD3
Sample Type: PANC1 Whole Cell lysates
Antibody Dilution: 1.0ug/ml



Rabbit Anti-PARD3 Antibody
Catalog Number: TA356245
Formalin Fixed Paraffin Embedded Tissue:
Human heart Tissue
Observed Staining: Cytoplasmic, plasma membrane in intercalated disc
Primary Antibody Concentration: N/A
Other Working Concentrations: 1:600
Secondary Antibody: Donkey anti-Rabbit-Cy3
Secondary Antibody Concentration: 1:200
Magnification: 20X
Exposure Time: 0.5–2.0 sec