

## Product datasheet for **TA356239**

### Zonula occludens protein 3 (TJP3) Rabbit Polyclonal Antibody

#### Product data:

Product Type:	Primary Antibodies
Applications:	WB
Reactivity:	Human
Host:	Rabbit
Clonality:	Polyclonal
Immunogen:	The immunogen is a synthetic peptide directed towards the middle region of human TJP3
Specificity:	<b>Expected reactivity:</b> Human
Formulation:	Liquid. Purified antibody supplied in 1x PBS buffer with 0.09% (w/v) sodium azide and 2% sucrose. <i>Note that this product is shipped as lyophilized powder to China customers.</i>
Concentration:	lot specific
Purification:	Affinity purified
Conjugation:	Unconjugated
Storage:	For short term use, store at 2-8°C up to 1 week. For long term storage, store at -20°C in small aliquots to prevent freeze-thaw cycles.
Stability:	Shelf life: one year from despatch.
Predicted Protein Size:	102 kDa
Gene Name:	tight junction protein 3
Database Link:	<a href="#">NP_055243</a> <a href="#">Entrez Gene 27134 Human</a> <a href="#">O95049</a>



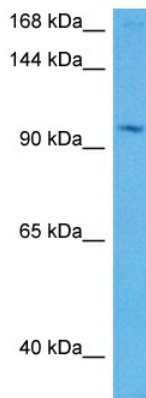
[View online »](#)

**Background:**

The protein encoded by this gene is a member of the membrane-associated guanylate kinase-like (MAGUK) protein family which is characterized by members having multiple PDZ domains, a single SH3 domain, and a single guanylate kinase-like (GUK)-domain. In addition, members of the zonula occludens protein subfamily have an acidic domain, a basic arginine-rich region, and a proline-rich domain. The protein encoded by this gene plays a role in the linkage between the actin cytoskeleton and tight-junctions and also sequesters cyclin D1 at tight junctions during mitosis. Alternative splicing results in multiple transcript variants encoding distinct isoforms. This gene has a partial pseudogene on chromosome 1.

**Synonyms:**

MGC119546; ZO-3; ZO3

**Product images:**

Host: Rabbit  
Target Name: TJP3  
Sample Type: 293T Cell Lysate  
Antibody Dilution: 1.0µg/ml

Host: Rabbit  
Target Name: TJP3  
Sample Tissue: Human 293T Whole Cell lysates  
Antibody Dilution: 2ug/ml