

## Product datasheet for **TA356238**

### OCN Rabbit Polyclonal Antibody

#### Product data:

Product Type:	Primary Antibodies
Applications:	WB
Reactivity:	Human, Rat
Host:	Rabbit
Clonality:	Polyclonal
Immunogen:	The immunogen is a synthetic peptide directed towards the N terminal region of human OCLN
Specificity:	<b>Expected reactivity:</b> Cow, Dog, Guinea Pig, Horse, Human, Mouse, Rabbit, Rat, Zebrafish <b>Homology:</b> Cow: 100%; Dog: 100%; Guinea Pig: 100%; Horse: 100%; Human: 100%; Mouse: 100%; Rabbit: 100%; Rat: 100%; Zebrafish: 82%
Formulation:	Liquid. Purified antibody supplied in 1x PBS buffer with 0.09% (w/v) sodium azide and 2% sucrose. <i>Note that this product is shipped as lyophilized powder to China customers.</i>
Concentration:	lot specific
Purification:	Affinity Purified
Conjugation:	Unconjugated
Storage:	For short term use, store at 2-8°C up to 1 week. For long term storage, store at -20°C in small aliquots to prevent freeze-thaw cycles.
Stability:	Shelf life: one year from despatch.
Predicted Protein Size:	59kDa
Gene Name:	occludin
Database Link:	<a href="#">NP_002529</a> <a href="#">Entrez Gene 83497 Rat</a> <a href="#">Q16625</a>

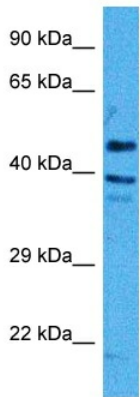


[View online »](#)

**Background:**

OCN is an integral membrane protein which is located at tight junctions. This protein may be involved in the formation and maintenance of the tight junction. The possibility of several alternatively spliced products has been suggested but the full nature of these products has not been described. This gene encodes an integral membrane protein which is located at tight junctions. This protein may be involved in the formation and maintenance of the tight junction. The possibility of several alternatively spliced products has been suggested but the full nature of these products has not been described. Publication Note: This RefSeq record includes a subset of the publications that are available for this gene. Please see the Entrez Gene record to access additional publications.

**Product images:**



Host: Rabbit  
 Target Name: Ocln  
 Sample Type: Rat Brain Lysate  
 Antibody Dilution: 1.0µg/ml

Host: Rat  
 Target Name: OCLN  
 Sample Tissue: Rat Brain  
 Antibody Dilution: 1ug/ml

**OCN**



Host: Rabbit  
 Target Name: OCLN  
 Sample Type: Human Fetal Liver  
 Antibody Dilution: 1ug/ml

Host: Rabbit  
 Target Name: OCLN  
 Sample Tissue: Human Fetal Liver  
 Antibody Dilution: 1.0ug/ml