

Product datasheet for **TA356237**

Pard6a Rabbit Polyclonal Antibody

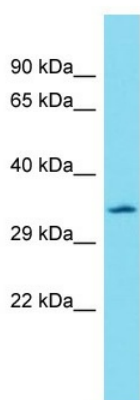
Product data:

Product Type:	Primary Antibodies
Applications:	WB
Reactivity:	Mouse
Host:	Rabbit
Clonality:	Polyclonal
Immunogen:	The immunogen is a synthetic peptide directed towards the C-terminal region of Mouse Pard6a
Specificity:	Expected reactivity: Cow, Guinea Pig, Horse, Human, Mouse, Rabbit, Rat, Yeast Homology: Cow: 100%; Guinea Pig: 93%; Horse: 93%; Human: 100%; Mouse: 86%; Rabbit: 93%; Rat: 87%; Yeast: 85%
Formulation:	Liquid. Purified antibody supplied in 1x PBS buffer with 0.09% (w/v) sodium azide and 2% sucrose. <i>Note that this product is shipped as lyophilized powder to China customers.</i>
Concentration:	lot specific
Purification:	Affinity Purified
Conjugation:	Unconjugated
Storage:	For short term use, store at 2-8°C up to 1 week. For long term storage, store at -20°C in small aliquots to prevent freeze-thaw cycles.
Stability:	Shelf life: one year from despatch.
Predicted Protein Size:	35kDa
Gene Name:	par-6 family cell polarity regulator alpha
Database Link:	NP_001040901 Entrez Gene 56513 Mouse D3Z2R1
Background:	The function of this protein remains unknown.
Synonyms:	PAR-6; PAR-6A; PAR6; PAR6A; PAR6alpha; PAR6C; TAX40; TIP-40



[View online »](#)

Product images:



Host: Rabbit
Target Name: Pard6a
Sample Type: Mouse Thymus lysates
Antibody Dilution: 1.0ug/ml