

Product datasheet for TA356234

MARVELD2 Rabbit Polyclonal Antibody

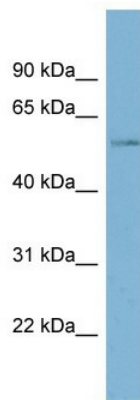
Product data:

Product Type:	Primary Antibodies
Applications:	WB
Reactivity:	Human
Host:	Rabbit
Clonality:	Polyclonal
Immunogen:	The immunogen is a synthetic peptide directed towards the middle region of human MARVELD2
Specificity:	Expected reactivity: Cow, Dog, Horse, Human, Mouse, Pig, Rabbit, Rat, Zebrafish Homology: Cow: 100%; Dog: 86%; Horse: 100%; Human: 100%; Mouse: 100%; Pig: 100%; Rabbit: 93%; Rat: 100%; Zebrafish: 93%
Formulation:	Liquid. Purified antibody supplied in 1x PBS buffer with 0.09% (w/v) sodium azide and 2% sucrose.
Concentration:	lot specific
Purification:	Affinity Purified
Conjugation:	Unconjugated
Storage:	For short term use, store at 2-8°C up to 1 week. For long term storage, store at -20°C in small aliquots to prevent freeze-thaw cycles.
Stability:	Shelf life: one year from despatch.
Predicted Protein Size:	52kDa
Gene Name:	MARVEL domain containing 2
Database Link:	NP_653325 Entrez Gene 153562 Human C9J8H4
Background:	Tight junctions (TJ) prevent leakage of solutes through the paracellular pathway of epithelial cells. MARVELD2, or tricellulin (TRIC), is an integral membrane protein concentrated at the vertically oriented TJ strands of tricellular contacts (Ikenouchi et
Synonyms:	DFNB49; FLJ30532; MARVD2; MRVLDC2; TRIC; tricellulin
Protein Families:	Transmembrane



[View online »](#)

Product images:



WB Suggested Anti-MARVELD2 Antibody Titration:
0.2-1 ug/ml
Positive Control: PANC1 cell lysate