

## Product datasheet for **TA356233**

### Klf7 Rabbit Polyclonal Antibody

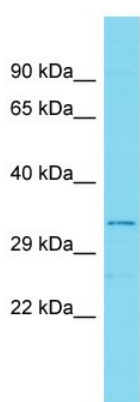
#### Product data:

Product Type:	Primary Antibodies
Applications:	WB
Reactivity:	Mouse
Host:	Rabbit
Clonality:	Polyclonal
Immunogen:	The immunogen is a synthetic peptide directed towards the middle region of Mouse Klf7
Specificity:	<b>Expected reactivity:</b> Cow, Dog, Guinea Pig, Horse, Human, Mouse, Rabbit, Rat, Zebrafish <b>Homology:</b> Cow: 100%; Dog: 100%; Guinea Pig: 100%; Horse: 100%; Human: 100%; Mouse: 100%; Rabbit: 100%; Rat: 100%; Zebrafish: 91%
Formulation:	Liquid. Purified antibody supplied in 1x PBS buffer with 0.09% (w/v) sodium azide and 2% sucrose. <i>Note that this product is shipped as lyophilized powder to China customers.</i>
Concentration:	lot specific
Purification:	Affinity Purified
Conjugation:	Unconjugated
Storage:	For short term use, store at 2-8°C up to 1 week. For long term storage, store at -20°C in small aliquots to prevent freeze-thaw cycles.
Stability:	Shelf life: one year from despatch.
Predicted Protein Size:	33kDa
Gene Name:	Kruppel-like factor 7 (ubiquitous)
Database Link:	<a href="#">NP_291041</a> <a href="#">Entrez Gene 93691 Mouse</a> <a href="#">Q99JB0</a>
Background:	Klf7 is a transcriptional activator. It binds specifically to an Ikaros core binding element that is crucial for in vivo NTRK1/TrkA enhancer function.
Synonyms:	UKLF



[View online »](#)

Product images:



Host: Rabbit  
Target Name: Klf7  
Sample Type: Mouse Testis lysates  
Antibody Dilution: 1.0ug/ml