

## Product datasheet for TA356227

### Anxa6 Rabbit Polyclonal Antibody

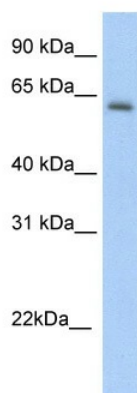
#### Product data:

Product Type:	Primary Antibodies
Applications:	WB
Reactivity:	Mouse
Host:	Rabbit
Clonality:	Polyclonal
Immunogen:	The immunogen is a synthetic peptide directed towards the C terminal region of mouse Anxa6
Specificity:	<b>Expected reactivity:</b> Cow, Dog, Guinea Pig, Horse, Human, Mouse, Rabbit, Rat <b>Homology:</b> Cow: 86%; Dog: 100%; Guinea Pig: 100%; Horse: 93%; Human: 100%; Mouse: 100%; Rabbit: 100%; Rat: 100%
Formulation:	Liquid. Purified antibody supplied in 1x PBS buffer with 0.09% (w/v) sodium azide and 2% sucrose. <i>Note that this product is shipped as lyophilized powder to China customers.</i>
Concentration:	lot specific
Purification:	Protein A purified
Conjugation:	Unconjugated
Storage:	For short term use, store at 2-8°C up to 1 week. For long term storage, store at -20°C in small aliquots to prevent freeze-thaw cycles.
Stability:	Shelf life: one year from despatch.
Predicted Protein Size:	74kDa
Gene Name:	annexin A6
Database Link:	<a href="#">NP_038500</a> <a href="#">Entrez Gene 11749 Mouse</a> <a href="#">P14824</a>
Background:	Anxa6 may associate with CD21 and may regulate the release of Ca(2+) from intracellular stores.
Synonyms:	Annexin-6; ANX6; calelectrin; Calphobindin-II; CBP68; Chromobindin-20; CPB-II; p68; p70



[View online »](#)

Product images:



WB Suggested Anti-Anxa6 Antibody Titration:  
5.0ug/ml  
Positive Control: SP2/O cell lysate